

ClubCar[®]

Carryall-I Electric Illustrated Parts List



4152 WASHINGTON ROAD
P.O. BOX 204658
TELEPHONE 404-863-3000
AUGUSTA, GEORGIA 30917-4658
USA
TELEX: 54-5444
FAX 404/860-7231

Manual Number
1014651
Effective June, 1988
0890B00000

WARNING

This manual to be used for identification and ordering of service parts only. Be sure to read and use the maintenance and service manual for any repair.

ORDERING INFORMATION

SHIPMENT: We ship UPS whenever possible. Larger shipments are made by common carrier. On written orders please include street address or name of street and nearest intersecting road if on a rural route. A Post Office Box is not enough for UPS. Most orders are shipped within 2 working days.

PRICES: All prices are subject to change without prior notice. Prices in effect at time of shipments, regardless of date of order, shall apply.

TERMS: COD unless prior credit arrangements have been made.

DAMAGED OR SHORTAGES IN SHIPMENT: All claims for damaged or missing merchandise must be made to us within 10 days of receipt of shipment. If a shipment reaches you in damaged condition and is accepted it is your responsibility to make a claim with the carrier. If damage occurred due to improper packing let us know at once. The same applies to shortages.

RETURN GOODS POLICY: Do not return parts without a written authorization. Parts returned, freight collect or without approval will not be accepted.

INTERNATIONAL ORDERS: All international orders carry a \$20.00 handling fee. Terms to be Payment in Advance, Bank Draft or Letter of Credit.

WHEN ORDERING: Whenever possible please include the serial number of the car when ordering parts. This enables Club Car's parts department to process your order accurately and on a timely basis.

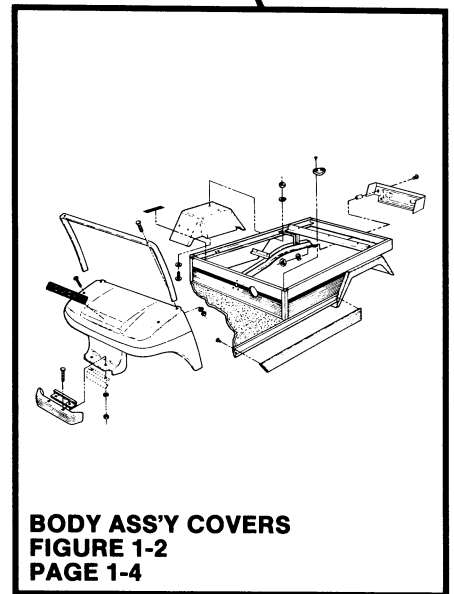
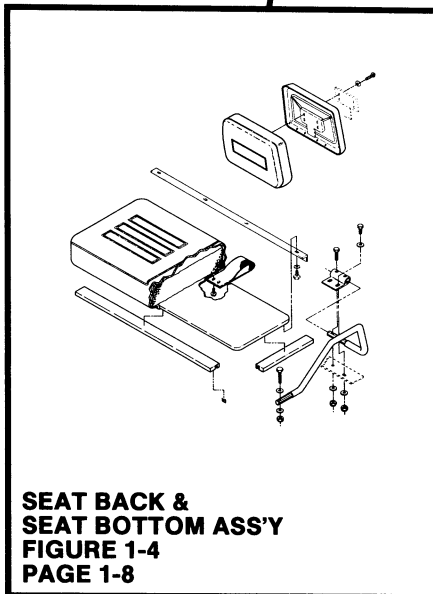
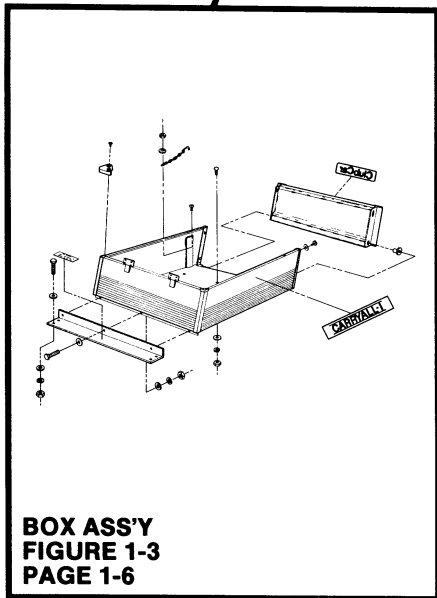
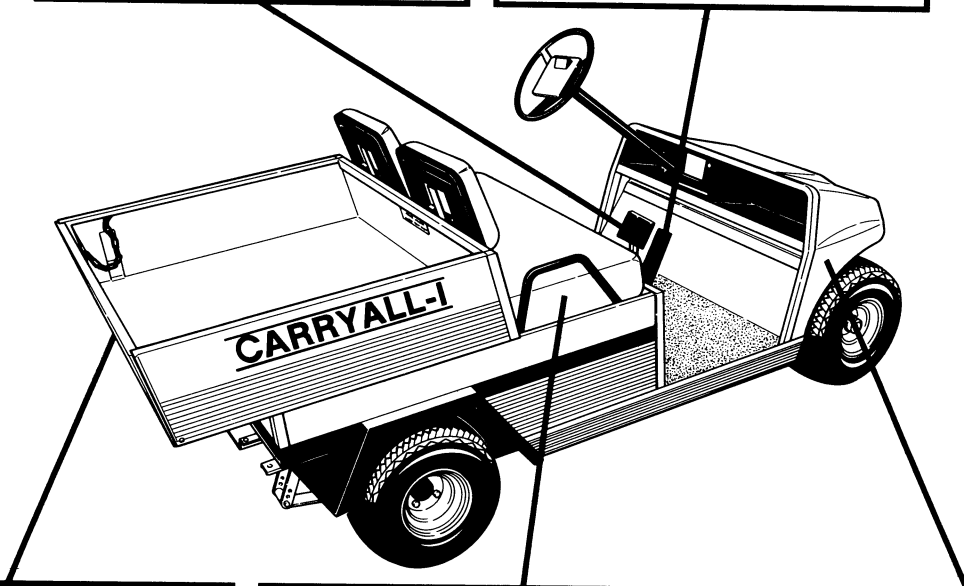
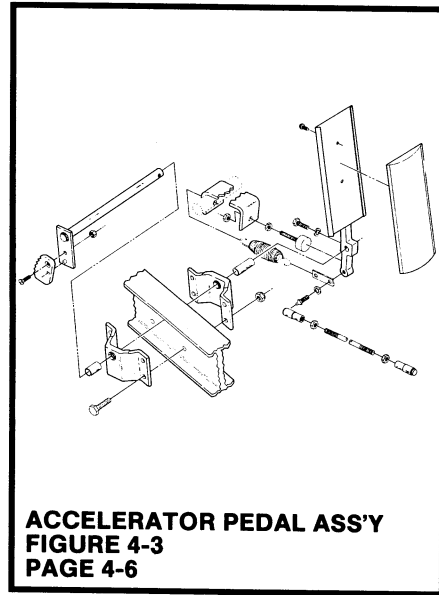
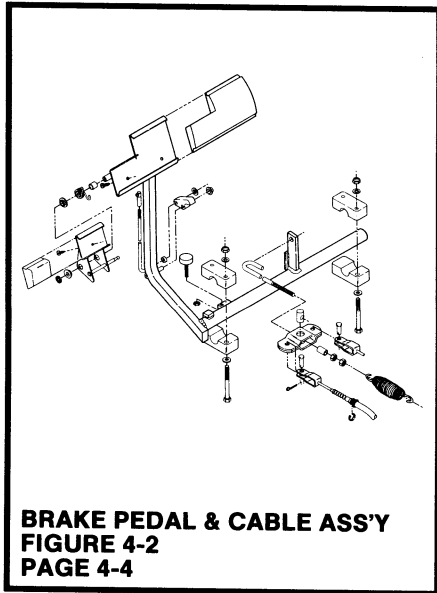
TELEPHONE ORDERS: Call area code 404-863-3000 and ask for Service Parts.

MAIL ORDERS: Write to Club Car, Inc., P.O. Box 204658, Augusta, GA 30917-4658, Attention: Service Parts.

CONTENTS

VISUAL INDEX	iii
BODY AND TRIM GROUP	SECTION I
Figure 1-1. Final Assembly, Carryall I	1-2
Listing	1-3
Figure 1-2. Body Assembly, Covers — Front and Rear	1-4
Listing	1-5
Figure 1-3. Box Assembly	1-6
Listing	1-7
Figure 1-4. Seat Back and Seat Bottom Assembly	1-8
Listing	1-9
POWER TRAIN GROUP	SECTION II
Figure 2-1. Drive Unit	2-2
Listing	2-3
Figure 2-2. Motor Assembly	2-4
Listing	2-5
SUSPENSION AND STEERING GROUP	SECTION III
Figure 3-1. Steering Column Assembly	3-2
Listing	3-3
Figure 3-2. Steering Assembly	3-4
Listing	3-5
Figure 3-3. Front Suspension Assembly	3-6
Listing	3-7
Figure 3-4. Rear Suspension Assembly	3-8
Listing	3-9
BRAKE SYSTEM AND PEDAL GROUP	SECTION IV
Figure 4-1. Brake Cluster, Right Hand and Left Hand	4-2
Listing	4-3
Figure 4-2. Brake Pedal and Cable Assembly	4-4
Listing	4-5
Figure 4-3. Accelerator Pedal Assembly	4-6
Listing	4-7
ELECTRICAL SYSTEM	SECTION V
Figure 5-1. Wiring Diagram	5-2
Listing	5-3
Figure 5-2. V-Glide Accelerator System	5-4
Listing	5-5
Figure 5-3. Resistor and Board Assembly	5-6
Listing	5-7
Figure 5-4. Forward and Reverse Switch Assembly	5-8
Listing	5-9
BATTERY CHARGERS	SECTION VI
Figure 6-1. Lester Battery Charger Model No. 7850	6-2
Listing	6-3
Figure 6-2. Club Car Solid State Fully Automatic	6-4
Listing	6-5
Figure 6-3. 230V-50Hz Lester Battery Charger Model No. 7030	6-6
Listing	6-7
ACCESSORIES	SECTION VII
MAINTENANCE AND SERVICE TOOLS	SECTION VIII

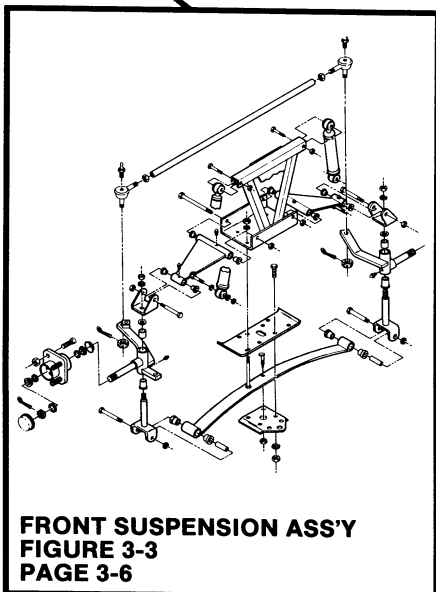
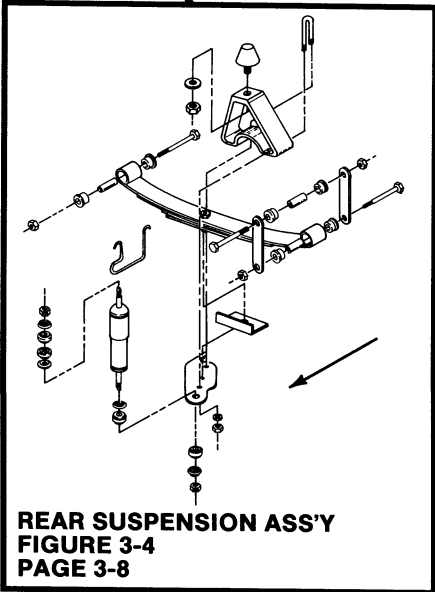
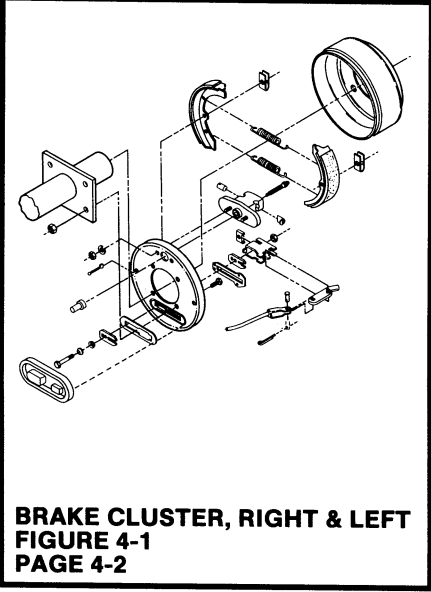
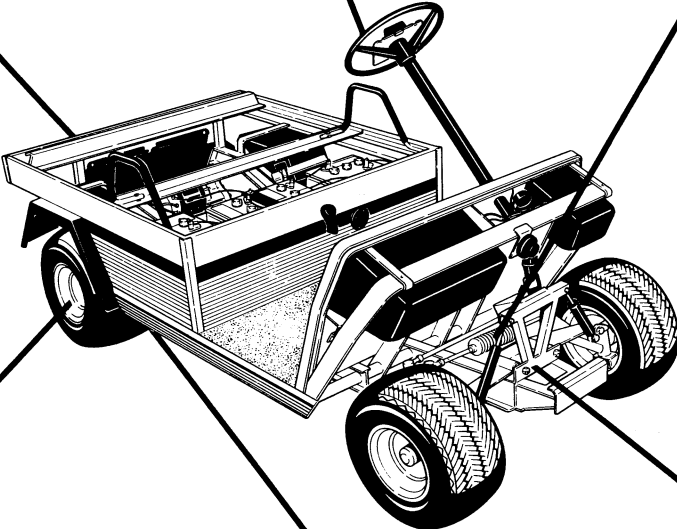
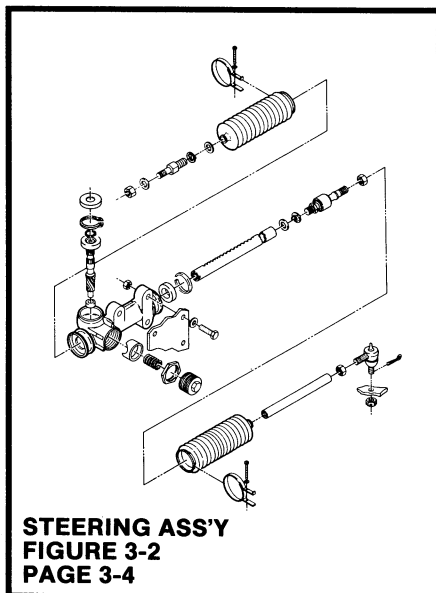
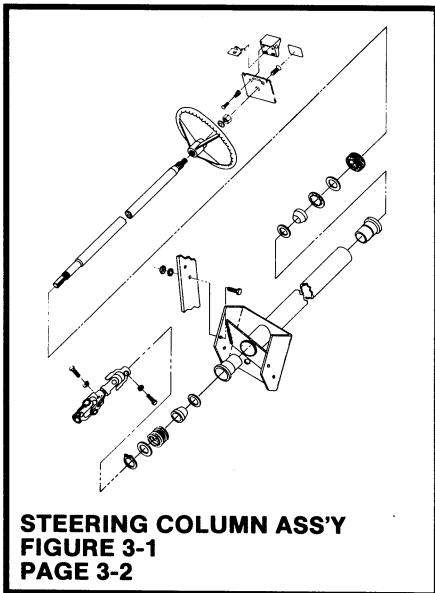
CARRYALL-I ELECTRIC CLUB CAR



VISUAL INDEX I

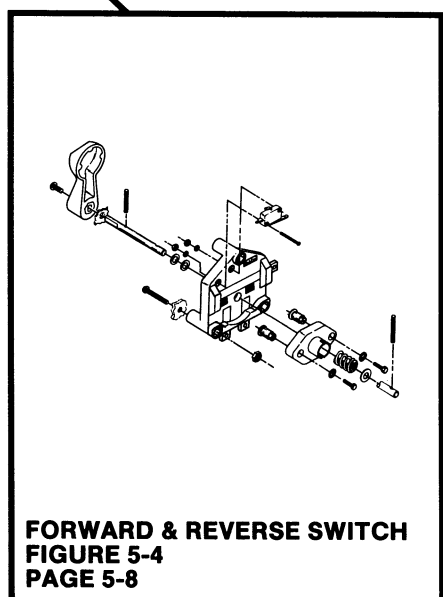
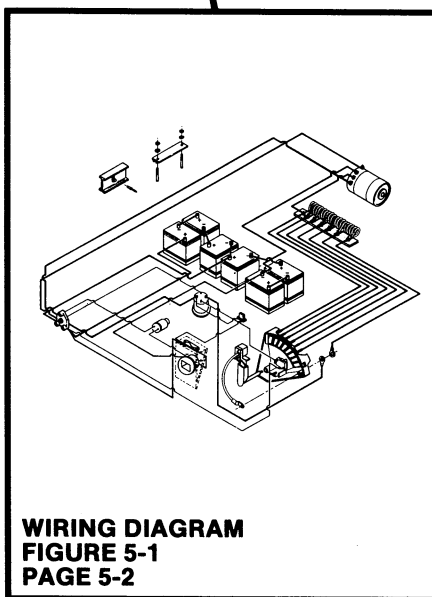
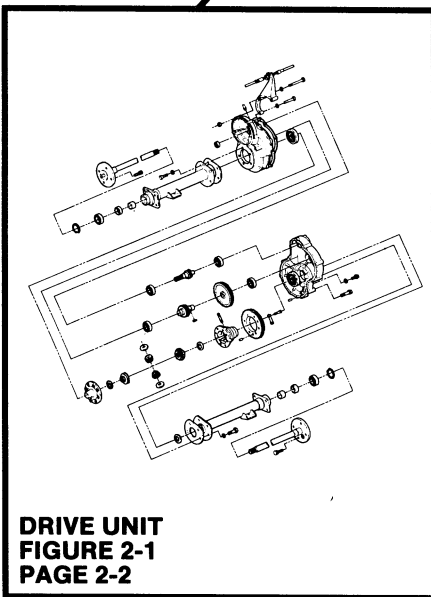
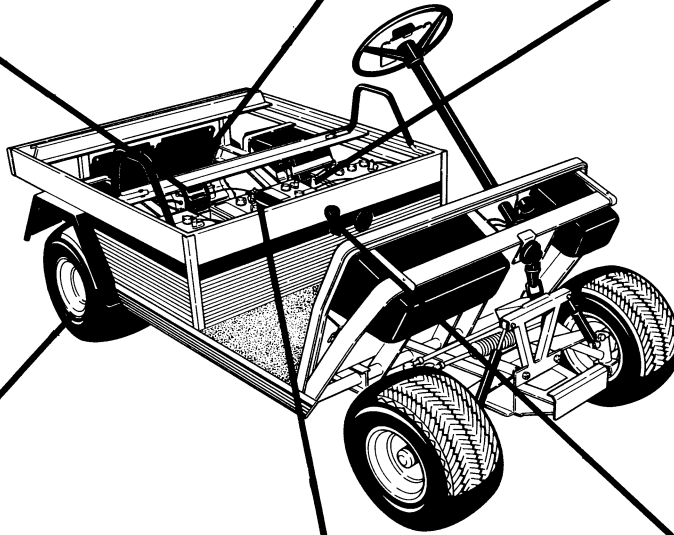
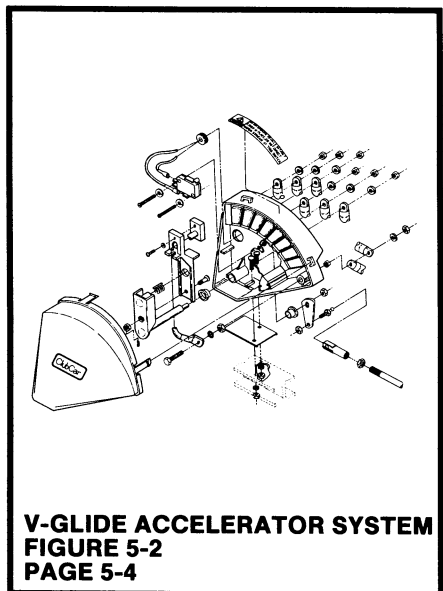
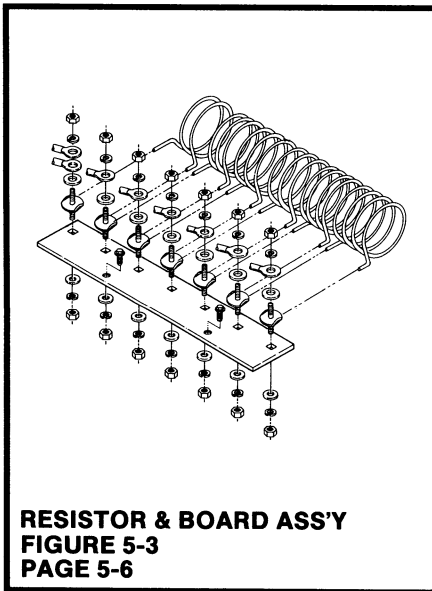
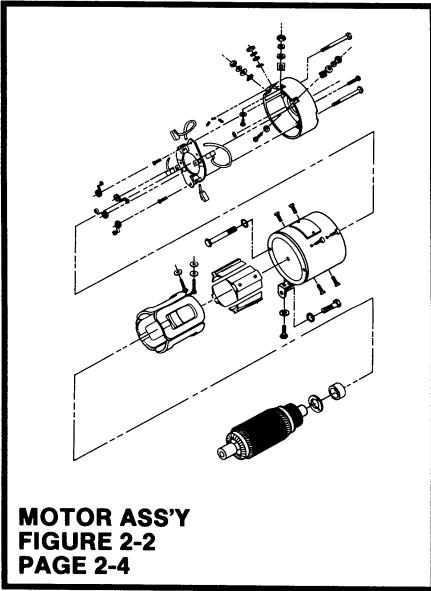


CARRYALL-I ELECTRIC CLUB CAR



VISUAL INDEX II

CARRYALL-I ELECTRIC CLUB CAR



VISUAL INDEX III



Section I

BODY AND TRIM GROUP

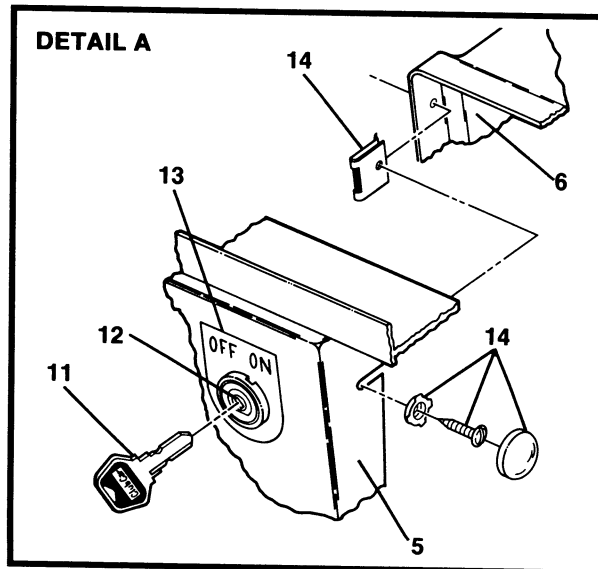
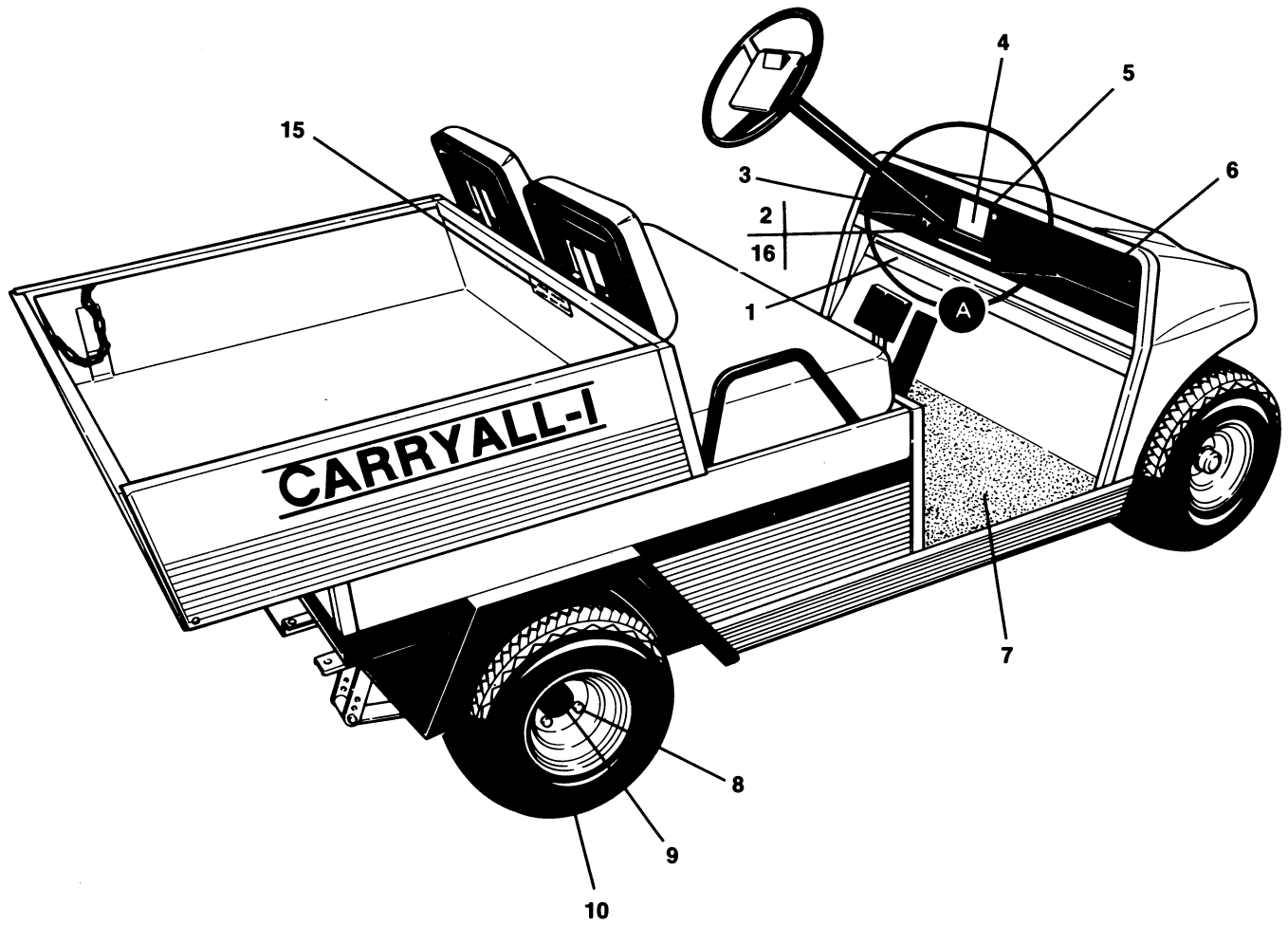


FIGURE 1-1. FINAL ASSEMBLY. SEE LIST 1-1.

FINAL ASSEMBLY, CARRYALL-I

FIGURE- ITEM NUMBER	PART NUMBER	UNITS PER ASM	DESCRIPTION			
			1	2	3	4
1 -	NO #	1	FINAL ASSEMBLY, CARRYALL-I FOR ILLUSTRATION, SEE FIGURE 1-1			
- 1	1014090	1	DASH WARNING DECAL			
- 2	1012499	1	STEERING COLUMN BOOT			
- 3	1013344	1	DASH COMPONENT, LEFT			
- 4	1014317	1	VEHICLE LOADING DECAL			
- 5	1013339	1	CENTER DASH PANEL			
- 6	1013343	1	DASH COMPONENT, RIGHT			
- 7	1011028	1	MAT, FLOOR			
- 8	1011390	2	LUG NUT PACKAGE (8 PIECES)			
- 9	1012186	2	DUST SEAL			
- 10	1014773	4	TIRE, STANDARD RIB			
- 10	1014774	4	TIRE, POWER RIB			
- 10	1014775	4	TIRE, TERRA TRACTION			
- 11	1012505	PR.	KEY			
- 12	1012531	1	SWITCH, KEY INCLUDES ITEM 11			
- 13	1012530	1	DECAL, ON/OFF			
- 14	1014645	2	SNAP WASHER KIT (BLACK)			
- 15	1014318	1	BED LOAD DECAL			
- 16	1014738	1	BOOT BACK UP STRIP			



CARRYALL-I Electric

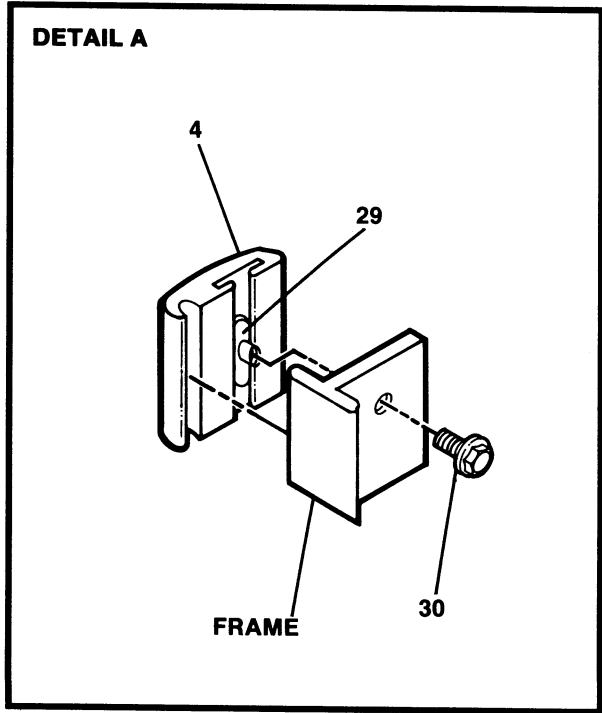
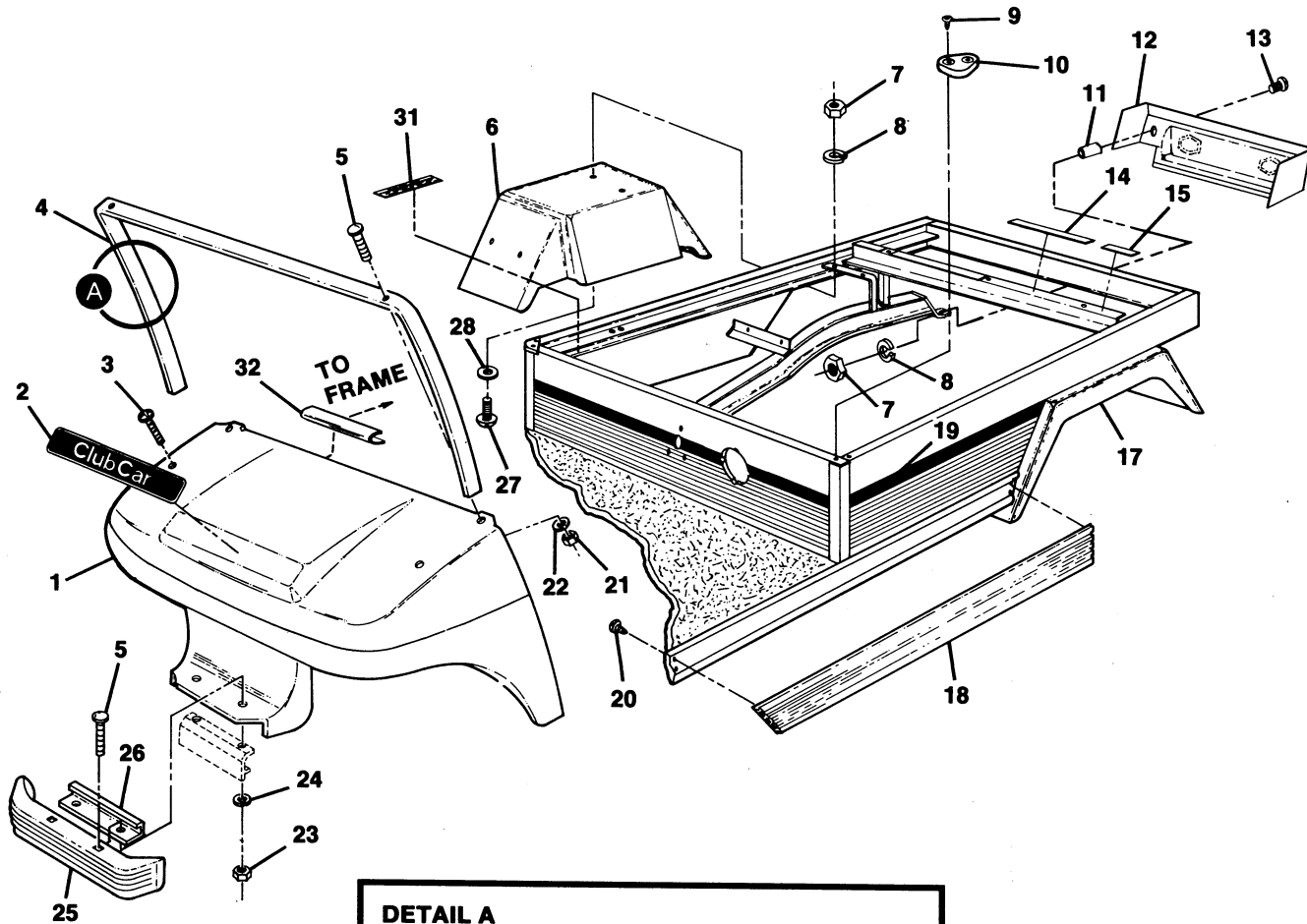


FIGURE 1-2. BODY ASSEMBLY COVERS — FRONT AND REAR. SEE LIST 1-2.

BODY ASSEMBLY COVERS — FRONT AND REAR

FIGURE- ITEM NUMBER	PART NUMBER	UNITS PER ASM	DESCRIPTION			
			1	2	3	4
2 -	NO #	1	BODY ASSEMBLY COVERS — FRONT AND REAR FOR ILLUSTRATION, SEE FIGURE 1-2			
- 1	1013345	1	COWL			
- 1	1013908	1	COWL WITH HEADLIGHT OPENINGS			
- 2	1013493	1	NAMEPLATE			
- 3	7251	2	SCREW, 15/16-18 X 1.00" PHILLIPS TRUSS HEAD			
- 4	1011014	1	COWL TRIM			
- 5	1010435	4	CARRIAGE BOLT, 5/16-18 UNC-2A			
- 6	1014370	1	INNER FENDER — RIGHT HAND			
- 7	1028	10	HEX NUT, 1/4-20			
- 8	451	10	LOCKWASHER, 1/4"			
- 9	1014321	4	SCREW, #10 TRUSS HEAD TORX			
- 10	1014387	2	CORNER CAP			
- 11	1014384	2	SPACER, 3/4"			
- 12	1014383	1	TAILSKIRT			
- 13	8418	2	SCREW, 1/4-20 X 1-1/2" PHILLIPS TRUSS HEAD			
- 14	NO #	2	BOX INSULATION — LONG (17.44") (SEE ITEM 16)			
- 15	NO #	2	BOX INSULATION — SHORT (2.22") (SEE ITEM 16)			
- 16	1014471	A/R	BOX INSULATION (ORDER BY FEET ONLY)			
- 17	1014373	1	INNER FENDER — LEFT HAND			
- 18	1013983	2	BUMPER GUARD — SIDE			
- 19	1013328	A/R	SOLID STRIPE, 2" WIDE (150' ROLL)			
- 20	1012047	8	SCREW, #8-22 SELF TAPPING			
- 21	7473	2	LOCKNUT, 5/16-18 UNC-2B			
- 22	1241	2	FLATWASHER, 5/16			
- 23	1242	2	NUT, HEX 5/16-18			
- 24	7174	2	LOCKWASHER, 5/16			
- 25	1011977	1	BUMPER			
- 26	1012204	1	BUMPER PLATE			
- 27	8248	8	SCREW, 1/4-20 X 3/4" PHILLIPS TRUSS HEAD			
- 28	1014306	8	FLATWASHER, 1/4"			
- 29	1011394	1	SLAB BASE "T" NUT PACKAGE (4 PIECES)			
- 30	1011017	6	SCREW, FLANGE LOCK			
- 31	1013677	1	BATTERY DANGER DECAL			
- 32	1014338	2	VINYL TRIM — COWL			



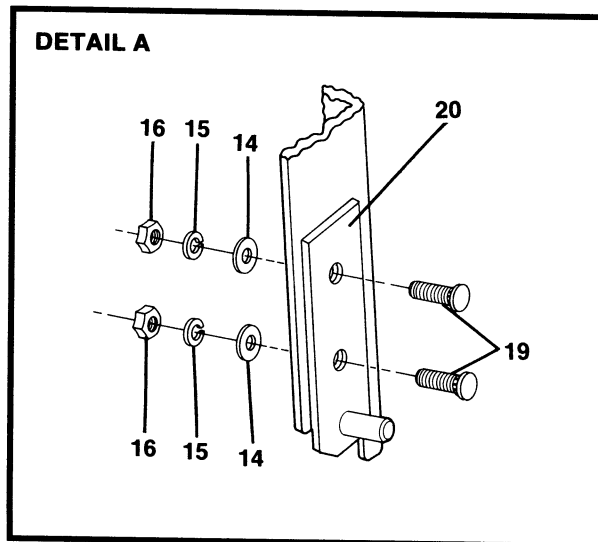
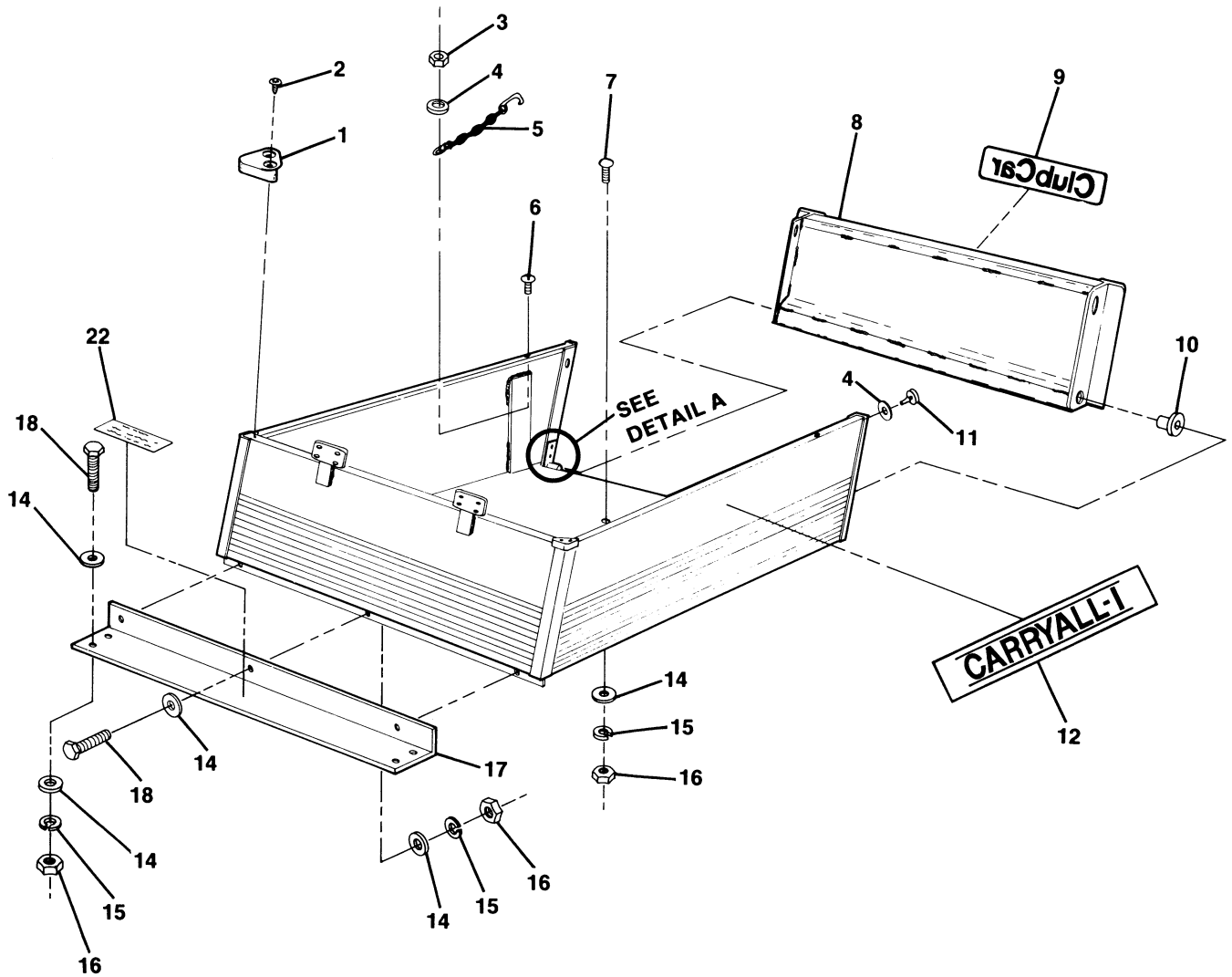


FIGURE 1-3. BOX ASSEMBLY. SEE LIST 1-3.

BOX ASSEMBLY

FIGURE- ITEM NUMBER	PART NUMBER	UNITS PER ASM	DESCRIPTION			
			1	2	3	4
3 -	NO #	1	BOX ASSEMBLY			
			FOR ILLUSTRATION, SEE FIGURE 1-3			
- 1	1014387	2	CORNER CAP			
- 2	1014321	4	#10 TRUSS HEAD TORX SCREW			
- 3	7473	2	5/16-18 NYLON LOCKNUT			
- 4	1011697	4	5/16 FLATWASHER			
- 5	1014131	2	CHAIN AND HOOK ASSEMBLY			
- 6	7251	2	5/16-18 X 1.00" MACHINE SCREW			
- 7	1014664	3	5/16-18 X 1-1/4" STEP BOLT			
- 8	1014362	1	TAILGATE WELDMENT			
- 9	1013317	1	LOGO DECAL			
- 10	7049	2	NYLON BUSHING			
- 11	1010436	2	RUBBER BUMPER			
- 12	1014379	1	CARRYALL-I DECAL — LEFT SIDE			
- 13	1014380	1	CARRYALL-I DECAL — RIGHT SIDE (NOT SHOWN)			
- 14	1241	21	5/16 FLATWASHER			
- 15	7174	14	5/16 LOCKWASHER			
- 16	1242	14	5/16-18 HEX NUT			
- 17	1014624	1	SEAT SUPPORT			
- 18	1010934	7	5/16-18 X 1.00" HEX BOLT			
- 19	1014537	4	5/16-18 X 3/4" SELF CLINCH STUD			
- 20	1014514	1	TAILGATE MOUNTING BRACKET ASSEMBLY — RIGHT HAND			
- 21	1014513	1	TAILGATE MOUNTING BRACKET ASSEMBLY — LEFT HAND (NOT SHOWN)			
- 22	1013496	1	HOT RESISTOR WARNING DECAL			



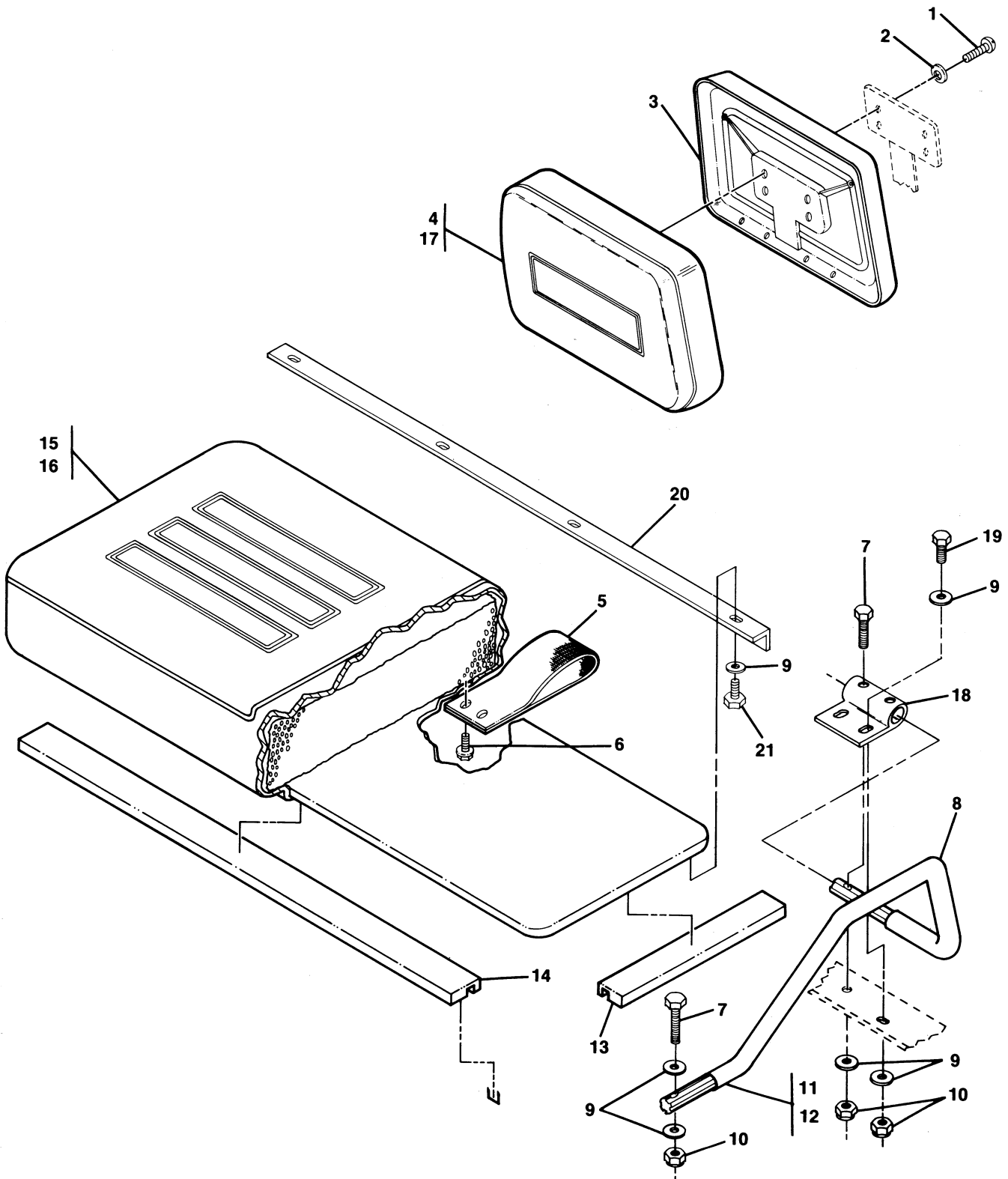


FIGURE 1-4. SEAT BACK & SEAT BOTTOM ASSEMBLY. SEE LIST 1-4.

SEAT BACK & SEAT BOTTOM ASSEMBLY

FIGURE- ITEM NUMBER	PART NUMBER	UNITS PER ASM	DESCRIPTION			
			1	2	3	4
4 -	NO #		SEAT BACK & SEAT BOTTOM ASSEMBLY FOR ILLUSTRATION, SEE FIGURE 1-4			
- 1	8248	8	SCREW, 1/4-20 X 3/4"			
- 2	8304	8	LOCKWASHER, 1/4 INTERNAL TOOTH			
- 3	1013335	2	CAP, SEAT BACK			
- 4	1013310	2	SEAT BACK SUBASSEMBLY			
- 5	1013309	1	BAG STRAP, SEAT BOTTOM			
- 6	1010545	2	SCREW, 1/4-14 X 3/4" TYPE AB			
- 7	7479	4	HEX BOLT, 1/4-20 X 1 1/4"			
- 8	1013319	2	VINYL ARMREST			
- 9	332	14	1/4 FLAT WASHER			
- 10	8233	6	1/4-20 NYLON LOCKNUT			
- 11	1013321	1	LEFT ARMREST ASSEMBLY INCLUDES ITEM 8			
- 12	1013320	1	RIGHT ARMREST ASSEMBLY INCLUDES ITEM 8			
- 13	1013311	4	SEAT BUMPER — SHORT			
- 14	1013312	1	SEAT BUMPER — LONG			
- 15	1014666	1	SEAT BOTTOM ASSEMBLY INCLUDES ITEMS 5, 6, 13 AND 14 FOR ILLUSTRATION, SEE FIGURE 1-4			
- 16	1010066	A/R	VINYL COVER — SEAT BOTTOM			
- 17	1010036	A/R	VINYL COVER — SEAT BACK			
- 18	1014662	2	ARMREST MOUNTING BRACKET			
- 19	7847	2	HEX BOLT, 1/4-20 X 3/4"			
- 20	1014734	1	SEAT BOTTOM STIFFENER			
- 21	304	4	HEX BOLT, 1/4-20 X 1"			





Section II

POWER TRAIN GROUP

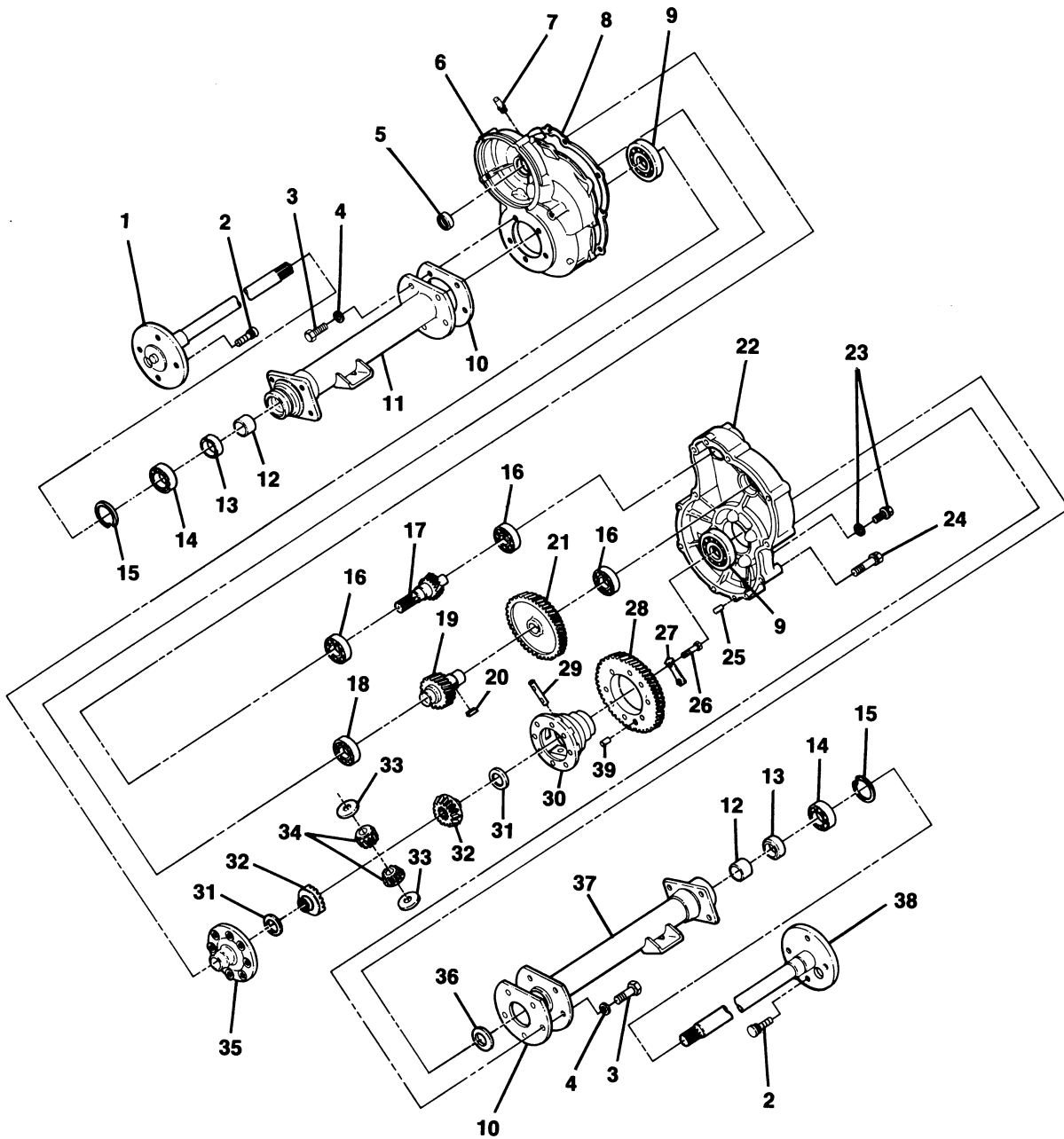


FIGURE 2-1. DRIVE UNIT. SEE LIST 2-1.

DRIVE UNIT

FIGURE- ITEM NUMBER	PART NUMBER	UNITS PER ASM	DESCRIPTION			
			1	2	3	4
1 -	1013664	1	DRIVE UNIT INCLUDES ALL ITEMS EXCEPT 8, 9, 10, 11 & 43 FOR ILLUSTRATION, SEE FIGURE 2-1			
- 1	1013785	1	AXLE ASSEMBLY, RIGHT INCLUDES ITEMS 2, 16, 18 AND 19			
- 2	1013787	8	LUG STUD			
- 3	1013790	10	BOLT (10 X 30)			
- 4	1013791	10	LOCKWASHER			
- 5	1013775	1	INPUT SHAFT OIL SEAL			
- 6	1013756	1	GEAR CASE — RIGHT HAND			
- 7	1012711	1	BREATHER PLUG			
- 8	1013758	1	GASKET			
- 9	7330	2	BEARING, BALL			
-10	1013789	2	GASKET — AXLE TUBE			
-11	1014209	1	AXLE TUBE ASSEMBLY — RIGHT HAND			
-12	1014207	1	BUSHING			
-13	1013794	2	AXLE SHAFT OIL SEAL			
-14	1011291	2	OUTER AXLE TUBE BEARING			
-15	1013792	2	CIRCLIP, TYPE-C			
-16	7335	3	INPUT GEAR BEARING			
-17	1013764	1	SHAFT, INPUT			
-18	7336	1	INTERMEDIATE GEAR BEARING			
-19	1013766	1	INTERMEDIATE GEAR — SMALL			
-20	1013780	1	KEY, SUNK			
-21	1013765	1	INTERMEDIATE GEAR — LARGE			
-22	1013757	1	GEAR CASE — LEFT HAND			
-23	1013759	2	FILL PLUG WITH GASKET			
-24	1013763	10	BOLT (6 X 50)			
-25	1012710	2	PIN, DOWEL			
-26	1013779	8	BOLT (8 X 37)			
-27	1013782	4	PLATE, LOCK			
-28	1013767	1	OUTPUT GEAR			
-29	1013772	1	DIFFERENTIAL PIN			
-30	1013768	1	DIFFERENTIAL GEAR CASE — LEFT HAND			
-31	1013773	2	PLATE, THRUST (DIFFERENTIAL GEAR)			
-32	1013771	2	DIFFERENTIAL GEAR			
-33	1013774	2	PLATE, THRUST (IDLER GEAR)			
-34	1013770	2	DIFFERENTIAL IDLER GEAR			
-35	1013769	1	DIFFERENTIAL GEAR CASE — RIGHT HAND			
-36	1013781	A/R	SHIM			
-37	1014210	1	AXLE TUBE ASSEMBLY — LEFT HAND			
-38	1013786	1	AXLE ASSEMBLY, LEFT INCLUDES ITEMS 2, 16, 18 AND 19			
-39	1014193	1	PIN, DOWEL			



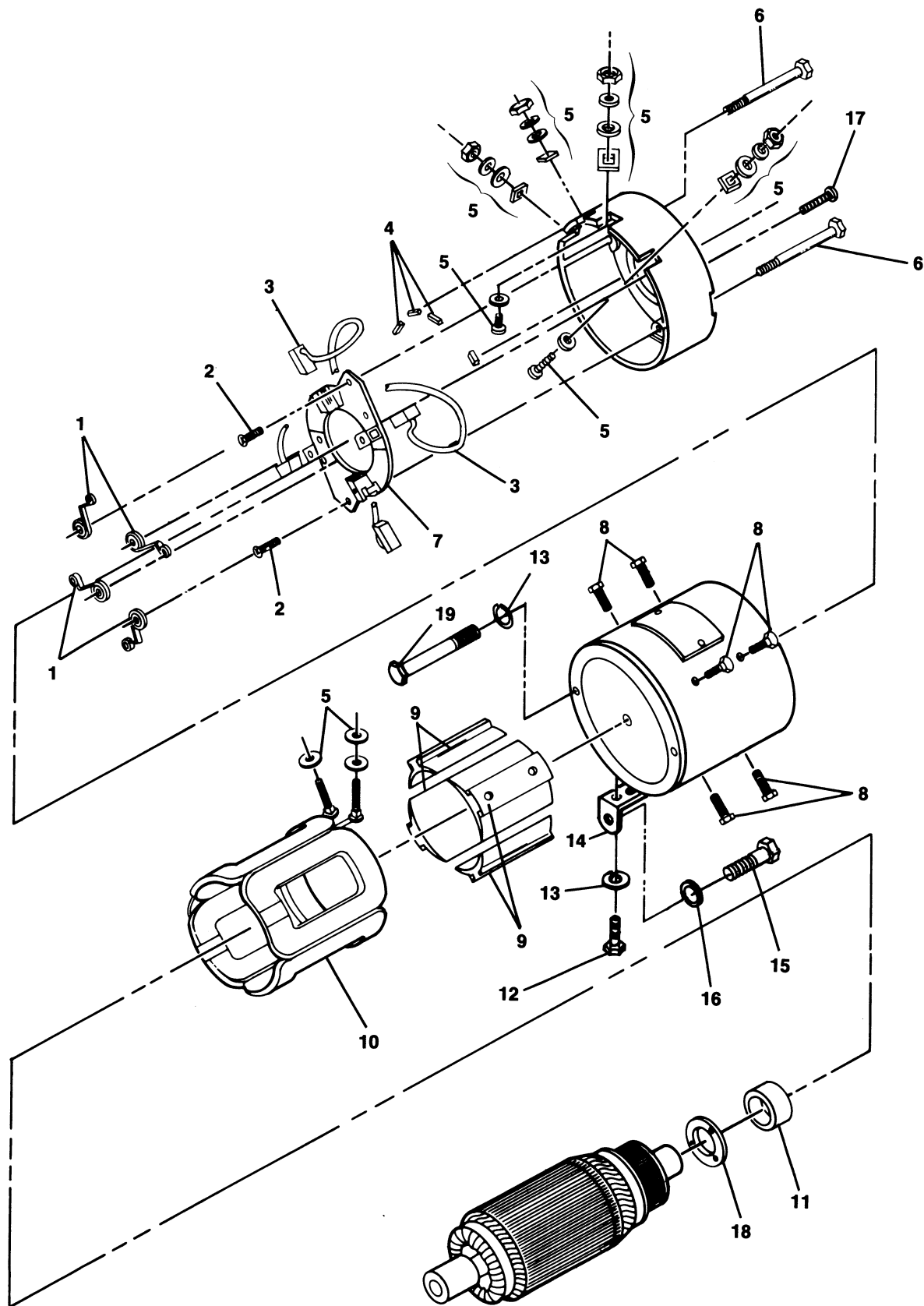


FIGURE 2-2. MOTOR ASSEMBLY. SEE LIST 2-2.

MOTOR ASSEMBLY

FIGURE- ITEM NUMBER	PART NUMBER	UNITS PER ASM	DESCRIPTION			
			1	2	3	4
2 -	1012191	1	2 H.P. MOTOR ASSEMBLY COMPLETE			
			FOR ILLUSTRATION, SEE FIGURE 2-2			
-	1014676	1	2.5 H.P. MOTOR KIT			
			FOR ILLUSTRATION, SEE FIGURE 2-2			
- 1	1011411	1	BRUSH SPRING PACKAGE (4 PIECES)			
- 2	1011283	2	SCREW, BRUSH RIGGING			
- 3	1011410	1	BRUSH PACKAGE (4 PIECES)			
- 4	1011409	2	RUBBER GASKET PACKAGE (4 PIECES)			
- 5	1011407	4	HARDWARE KIT			
- 6	1011275	2	MOTOR CLAMP SCREW (CE)			
- 7	1011284	1	BRUSH RIGGING			
- 8	1011412	1	SCREW, POLE PIECE PACKAGE (8 PIECES)			
- 9	1011413	1	FIELD POLE PIECE PACKAGE (4 PIECES)			
- 10	1011288	1	FIELD COILS, 2 H.P.			
- 10	1011289	1	FIELD COILS, 2.5 H.P.			
- 11	1011290	1	BALL BEARING, DOUBLE SHIELD			
- 12	7847	2	BOLT, HEX HEAD, 1/4-20 X 3/4"			
- 13	451	5	LOCKWASHER, 1/4"			
- 14	1012177	1	MOTOR/AXLE CLIP			
- 15	1010934	1	BOLT, HEX HEAD, 5/16-18 X 1"			
- 16	7174	1	LOCKWASHER, 5/16"			
- 17	1013893	3	SCREW, PAN HEAD, #8-32			
- 18	1013894	1	RETAINER-BEARING			
- 19	1014201	3	BOLT, HEX, 1/4-20 X 2-1/4"			





Section III

SUSPENSION AND STEERING GROUP

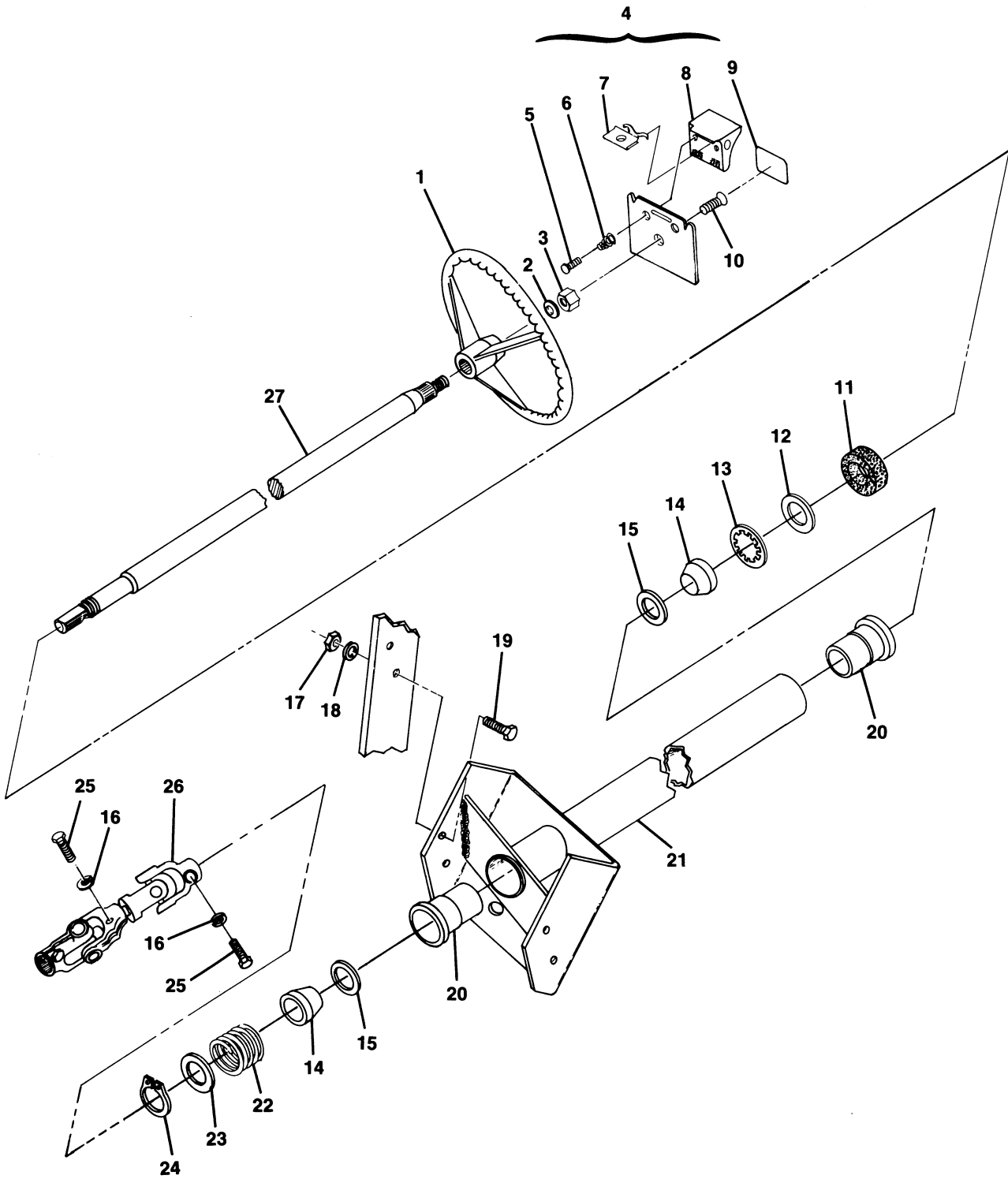


FIGURE 3-1. STEERING COLUMN ASSEMBLY. SEE LIST 3-1.

STEERING COLUMN ASSEMBLY

FIGURE- ITEM NUMBER	PART NUMBER	UNITS PER ASM	DESCRIPTION			
			1	2	3	4
1 -	NO #	1	STEERING COLUMN ASSEMBLY FOR ILLUSTRATION, SEE FIGURE 3-1			
- 1	1012569	1	WHEEL, STEERING			
- 2	1010193	1	FLATWASHER, 5/8"			
- 3	7209	1	NUT, SCORECARD			
- 4	1013434	1	SCORECARD KIT INCLUDES ITEMS 5 THRU 9			
- 5	1012565	2	SCREW, PHILLIPS PAN HEAD, TAPPING			
- 6	1012566	2	SPRING, COMPRESSION			
- 7	1014260	1	CLIP-PENCIL HOLDER			
- 8	1012504	1	PENCIL HOLDER			
- 9	1013389	1	OPERATING INSTRUCTIONS DECAL			
- 10	7216	1	SCREW, FLAT HEAD 5/16-18			
- 11	1012466	1	COVER, DUST			
- 12	1014211	1	SEAL BEARING			
- 13	1014214	1	RING, RETAINING			
- 14	1014125	2	WEDGE			
- 15	1014213	2	BEARING			
- 16	7174	2	LOCKWASHER, 5/16"			
- 17	8754	4	LOCKNUT, 3/8-16			
- 18	334	4	FLATWASHER, 3/8"			
- 19	320	4	BOLT, HEX, 3/8-16			
- 20	1014126	2	BEARING SEAT			
- 21	NO #	1	COLUMN WELD ASSEMBLY			
- 22	1014217	1	SPRING			
- 23	1012604	1	WASHER			
- 24	1012605	1	SNAP RING			
- 25	1012830	2	BOLT, HEX, 8MM			
- 26	1013861	1	JOINT YOKE COMPOUND STEERING INCLUDES ITEMS 16 AND 25			
- 27	NO #	1	SHAFT (SEE ITEM 28)			
- 28	1014268	1	STEERING COLUMN ASSEMBLY INCLUDES ITEMS 11 THRU 15, 20 THRU 24, AND 27			
- 29	1014216	A/R	STEERING COLUMN REBUILD KIT INCLUDES ITEMS 11 THRU 15, 20, 22 AND 24			



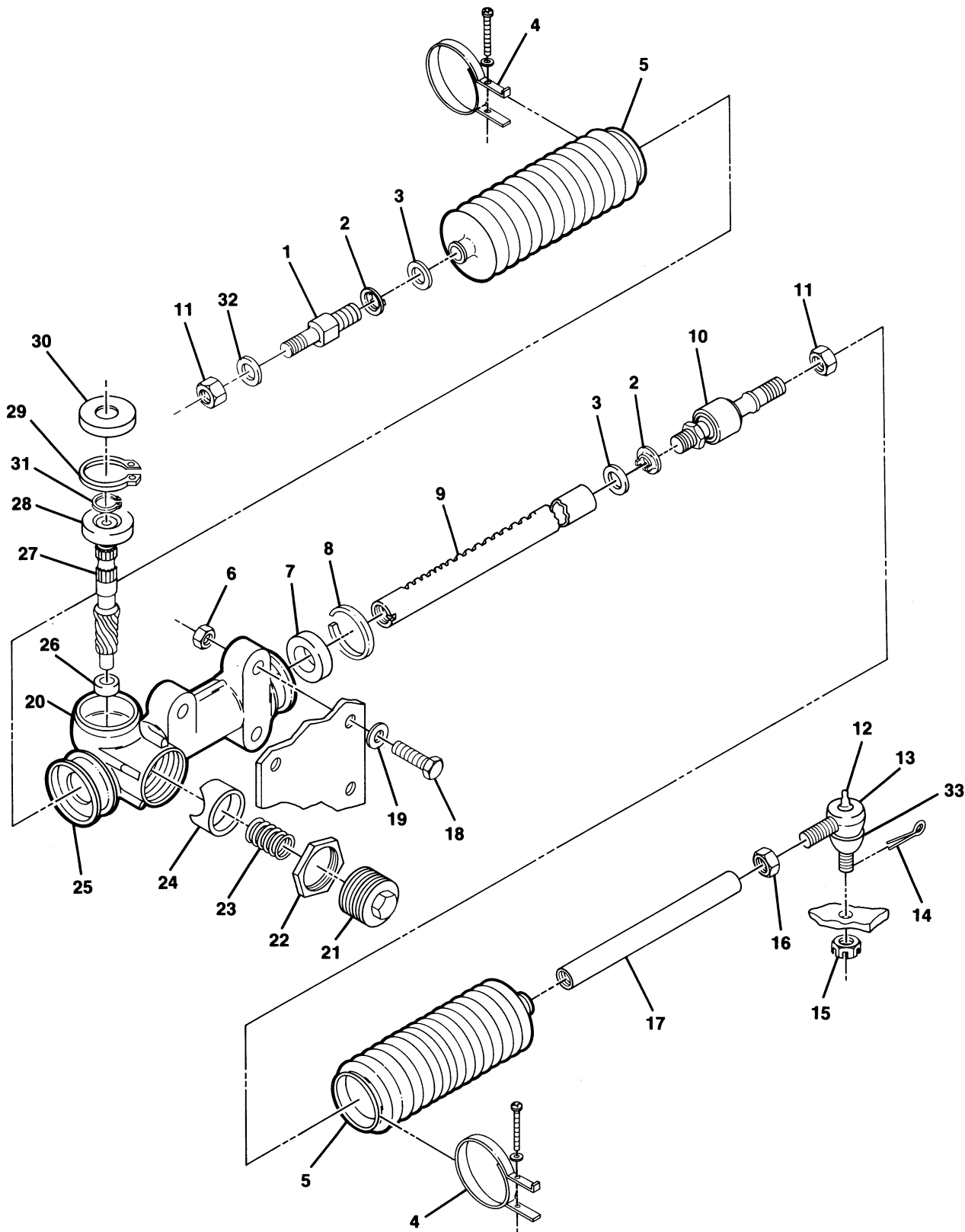


FIGURE 3-2. STEERING ASSEMBLY. SEE LIST 3-2.

STEERING ASSEMBLY

FIGURE- ITEM NUMBER	PART NUMBER	UNITS PER ASM	DESCRIPTION			
			1	2	3	4
2 -	NO #	1	STEERING ASSEMBLY FOR ILLUSTRATION, SEE FIGURE 3-2			
- 1	1013053	1	BOLT, STOPPER, 12MM			
- 2	1013040	2	LOCKWASHER, TIE ROD			
- 3	1013039	2	WASHER, TIE ROD STOPPER			
- 4	1013034	2	BAND, BELLOWS			
- 5	1013035	2	SEAL, DUST			
- 6	1010138	3	LOCKNUT, 3/8-16			
- 7	1013036	1	BUSHING, RACK			
- 8	1013037	1	RING, SNAP			
- 9	NO #	1	RACK, STEERING (SEE ITEM 20)			
-10	1013041	1	END, RACK			
-11	1013042	2	NUT, HEX, 12MM			
-12	1010116	1	FITTING, GREASE			
-13	7540	1	SOCKET, VERTICAL, LEFT HAND INCLUDES ITEMS 12 AND 15			
-14	1035	1	PIN, COTTER			
-15	7602	1	NUT, HEX, SLOTTED, 3/8-24			
-16	7555	1	NUT, LEFT HAND, JAM, 1/2-20			
-17	1012467	1	LINK, DRAG			
-18	1624	3	BOLT, HEX, 3/8-16			
-19	1012498	3	FLATWASHER, 3/8			
-20	1012452	1	STEERING GEAR BOX ASSEMBLY INCLUDES ITEMS 1 THRU 5, 7 THRU 11 AND 21 THRU 30			
-21	1013043	1	SCREW, RACK GUIDE			
-22	1013044	1	LOCKNUT, RACK SCREW			
-23	1013045	1	SPRING, RACK GUIDE PRESSURE			
-24	1013046	1	GUIDE, STEERING RACK			
-25	1013047	1	BOX, STEERING GEAR			
-26	1013048	1	BUSHING, PINION			
-27	NO #	1	PINION, STEERING (SEE ITEM 20)			
-28	1012884	1	BALL BEARING			
-29	1013051	1	RING-RETAINING, INTERNAL			
-30	1013052	1	DUST SEAL, STEERING PINION			
-31	1013031	1	RING-RETAINING, EXTERNAL			
-32	1013030	1	WASHER, END			
-33	1011930	1	DUST SEAL			



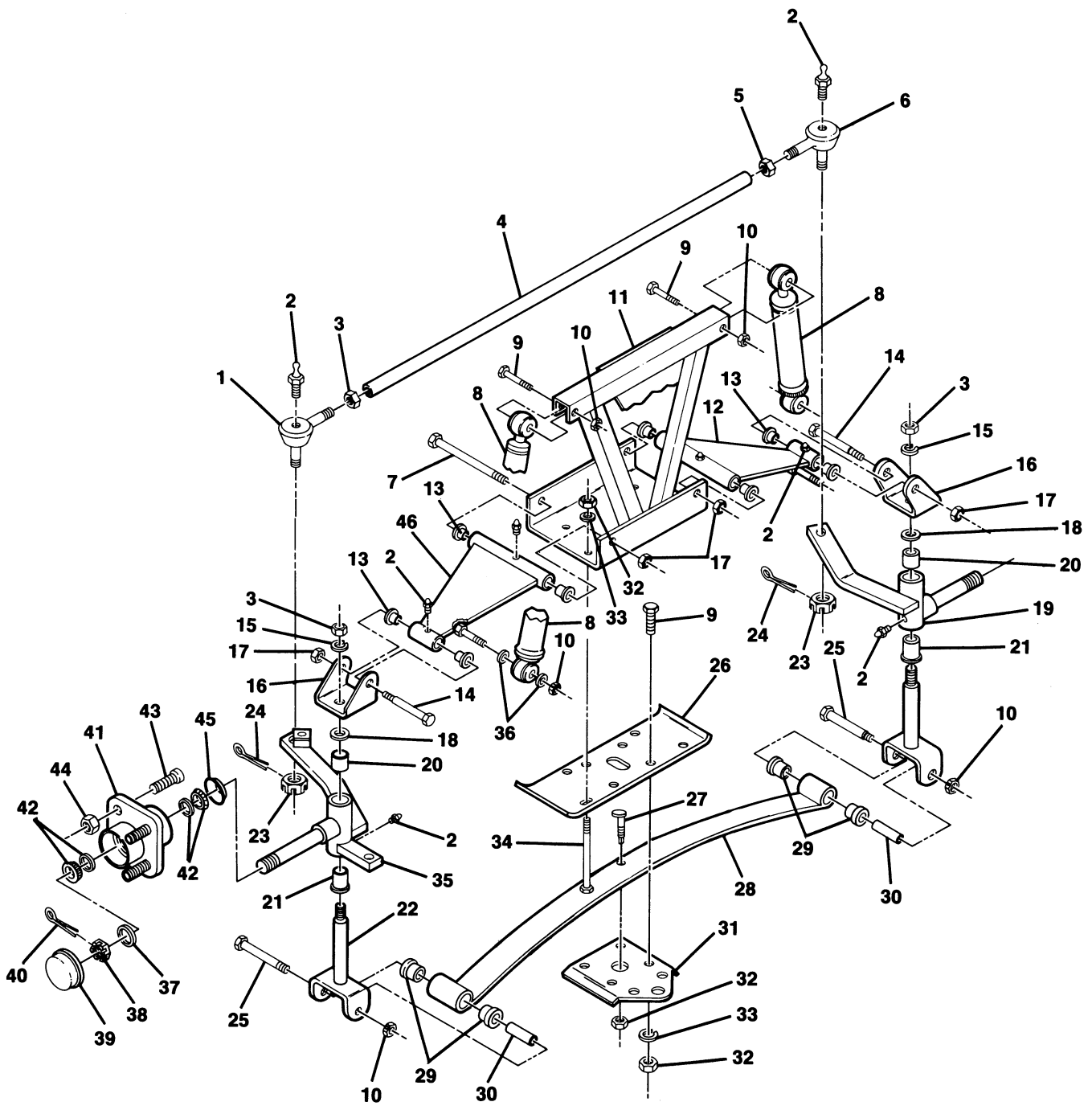


FIGURE 3-3. FRONT SUSPENSION ASSEMBLY. SEE LIST 3-3.

FRONT SUSPENSION ASSEMBLY

FIGURE- ITEM NUMBER	PART NUMBER	UNITS PER ASM	DESCRIPTION			
			1	2	3	4
3 -	NO #	1	FRONT SUSPENSION ASSEMBLY			
- 1	7539	1	FOR ILLUSTRATION, SEE FIGURE 3-3			
- 2	1010116	6	JOINT, RIGHT HAND BALL			
- 3	1308	3	INCLUDES ITEM 23			
- 4	1010219	1	FITTING, GREASE			
- 5	7555	1	NUT, 1/2-20 HEX			
- 6	7540	1	ROD, TIE			
- 7	1010126	2	NUT, 1/2-20 LEFT HAND HEX			
- 8	1014235	2	JOINT, LEFT HAND BALL			
- 9	1624	6	INCLUDES ITEM 23			
- 10	1010138	6	BOLT, 3/8-16 SHOULDER HEX			
- 11	1012496	1	ABSORBER, SHOCK			
- 12	1014712	1	BOLT, 3/8-16 HEX			
- 13	7719	8	LOCKNUT, 3/8-16			
- 14	1010125	2	SHOCK SUPPORT WELD ASSEMBLY			
- 15	209	2	"A" PLATE SUBASSEMBLY (LEFT HAND)			
- 16	1010117	2	INCLUDES ITEMS 2 AND 13			
- 17	8754	4	BUSHING, BRONZE			
- 18	1010150	2	BOLT, 3/8-16 SHOULDER HEX			
- 19	1010348	1	LOCKWASHER, 1/2"			
- 20	8067	2	CLEVIS, UPPER			
- 21	7048	2	LOCKNUT, 3/8-16 NYLON			
- 22	1010121	2	WASHER, THRUST			
- 23	7602	2	SPINDLE LEFT HAND ASSEMBLY			
- 24	1035	2	INCLUDES ITEMS 2, 20, AND 21			
- 25	8755	2	BUSHING, SPINDLE			
- 26	1010124	1	BUSHING, 3/4 BRONZE			
- 27	8745	1	KING PIN ASSEMBLY			
- 28	1013867	1	NUT, 3/8-24 SLOTTED HEX			
- 29	7050	4	PIN, COTTER 3/32 X 1"			
- 30	1012303	2	BOLT, 3/8-16 HEX			
- 31	1014276	1	PLATE, FRONT SPRING MOUNTING			
- 32	706	9	ADJUSTER, FRONT SPRING ECCENTRIC			
- 33	357	8	SPRING, FRONT			
- 34	1010200	4	INCLUDES ITEMS 27 AND 32			
- 35	1010347	1	BUSHING, 1/2 RUBBER			
- 36	334	4	BUSHING, 3/8 STEEL			
- 37	1010005	2	PLATE, FRONT SPRING RETAINER			
- 38	7840	2	NUT, 3/8-16 HEX			
- 39	1011887	2	LOCKWASHER, 3/8			
- 40	7910	2	BOLT, 3/8-16			
- 41	1011892	2	SPINDLE RIGHT HAND ASSEMBLY			
- 42	1011393	4	INCLUDES ITEMS 2, 20 AND 21			
- 43	1011304	8	FLATWASHER, 3/8			
- 44	1011390	8	FLATWASHER, SPECIAL			
- 45	1013135	2	NUT, 3/4-16 SLOTTED HEX			
- 46	1014713	1	COVER, DUST			
			PIN, COTTER 5/32 X 1"			
			HUB ASSEMBLY			
			INCLUDES ITEMS 39, 42, 43 AND 45			
			BEARING, HUB PACKAGE (2 PIECES)			
			STUD, LUG			
			NUT, LUG			
			SEAL, DUST			
			"A" PLATE ASSEMBLY, RIGHT HAND			
			INCLUDES ITEMS 2 AND 13			



CARRYALL-I Electric

Manual No. 1014651 - Issue Date 6/88
Effective Serial No. F8827-148615 thru _____

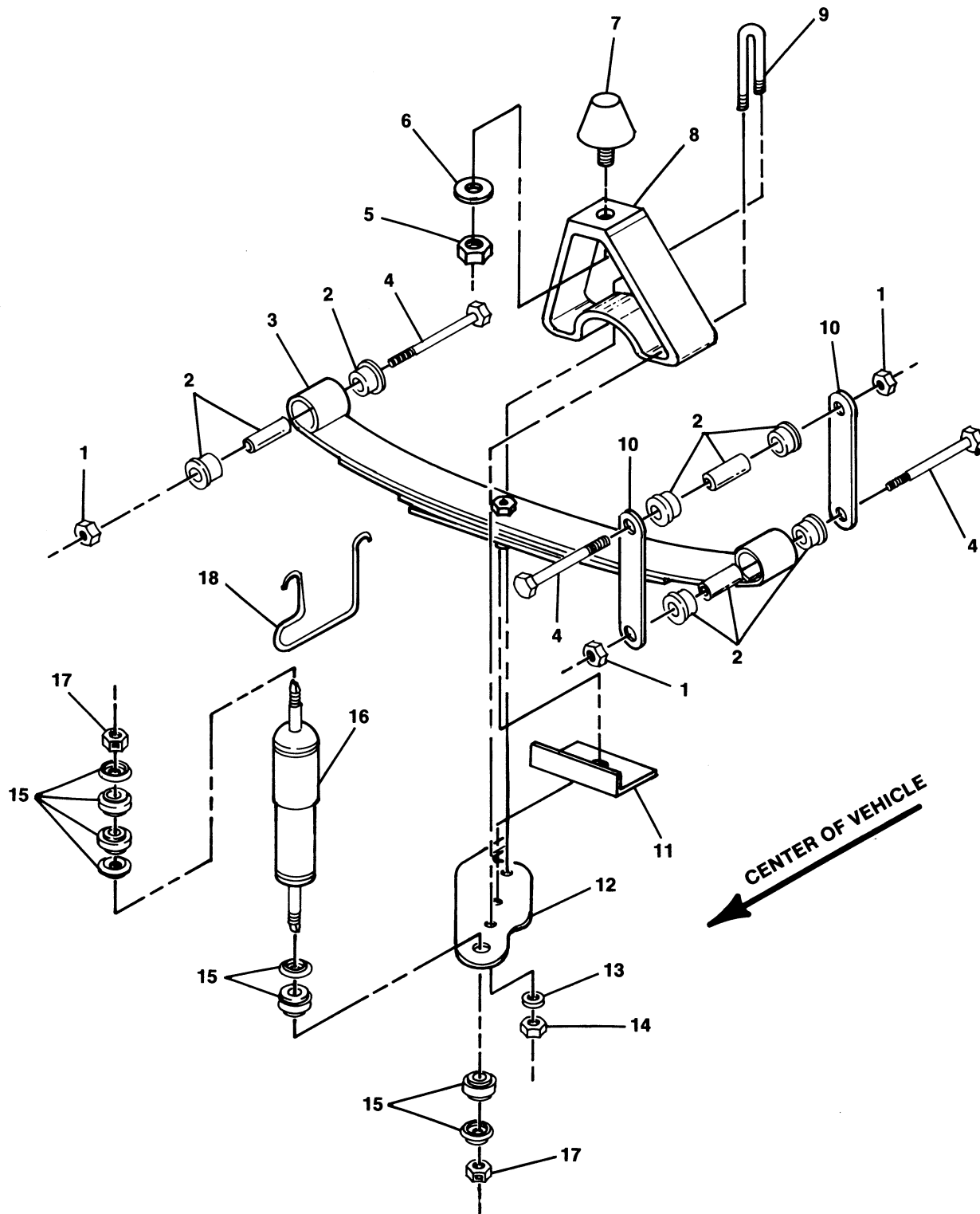


FIGURE 3-4. REAR SUSPENSION ASSEMBLY. SEE LIST 3-4.

REAR SUSPENSION ASSEMBLY

FIGURE- ITEM NUMBER	PART NUMBER	UNITS PER ASM	DESCRIPTION			
			1	2	3	4
4 -	NO #	1	REAR SUSPENSION ASSEMBLY			
			FOR ILLUSTRATION, SEE FIGURE 3-4			
- 1	1010138	6	DIMPLED LOCKNUT, 3/8-16 UNC			
- 2	1011416	6	SPRING BUSHING KIT			
- 3	1014675	2	REAR SPRING			
- 4	8755	6	BOLT, HEX, 3/8-16 X 3-3/8"			
- 5	7473	2	LOCKNUT, NYLON 5/16-18			
- 6	1241	2	FLATWASHER, 5/16			
- 7	1014552	2	BUMPER			
- 8	1014549	2	BUMPER MOUNT - ANGLED			
- 9	1014553	2	"U" BOLT			
- 10	7569	4	REAR SPRING SHACKLE			
- 11	1014573	2	SPRING RETAINER			
- 12	1012181	1	SHOCK MOUNT, RIGHT-HAND (NOT SHOWN)			
- 12	1012182	1	SHOCK MOUNT, LEFT-HAND			
- 13	1014557	4	FLATWASHER, 7/16"			
- 14	1014555	4	LOCKNUT, NYLON 7/16-14			
- 15	1011415	4	SHOCK ABSORBER CUSHION KIT			
- 16	1013164	1	SHOCK ABSORBER KIT			
			INCLUDES ITEMS 15 (4) AND 16 (2)			
- 17	1010145	4	NUT, HEX 3/8-24			
- 18	1013207	2	BRAKE CABLE HANGER			





Section IV

BRAKE SYSTEM AND PEDAL GROUP

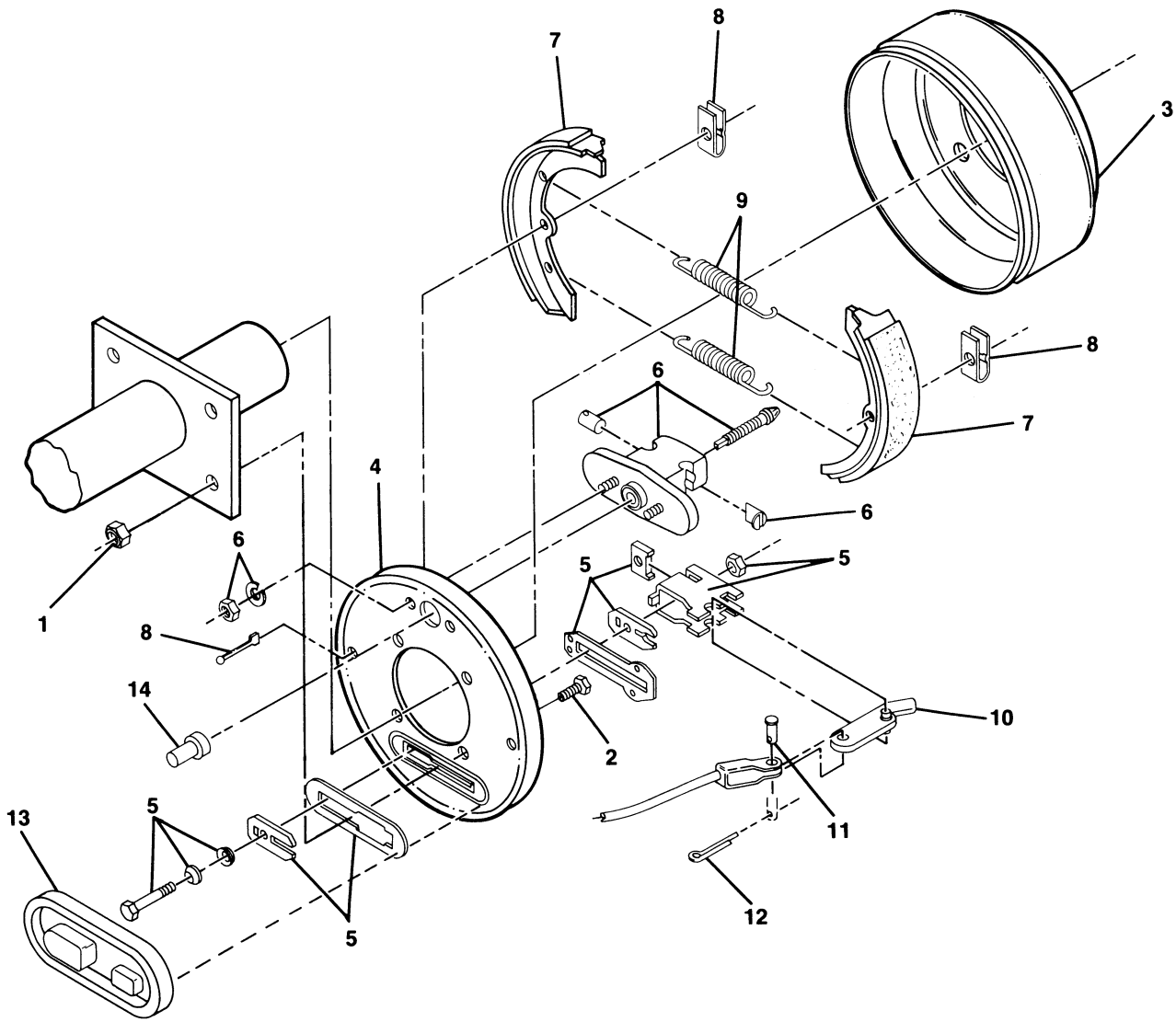


FIGURE 4-1. BRAKE CLUSTER, RIGHT HAND AND LEFT HAND. SEE LIST 4-1.

BRAKE CLUSTER, RIGHT HAND AND LEFT HAND

FIGURE- ITEM NUMBER	PART NUMBER	UNITS PER ASM	DESCRIPTION			
			1	2	3	4
1 -	1011145	1	RIGHT HAND BRAKE CLUSTER COMPLETE INCLUDES ITEMS 4 THRU 14			
	1011146	1	LEFT HAND BRAKE CLUSTER COMPLETE INCLUDES ITEMS 4 THRU 14 FOR ILLUSTRATION SEE FIGURE 4-1			
- 1	1013924	8	LOCKNUT, 5/16-24, GRADE 8			
- 2	1014153	8	BOLT, BRAKE CLUSTER MOUNTING			
- 3	1011137	2	DRUM, BRAKE			
- 4	1011494	1	PLATE BACKING, LEFT HAND			
- 4	1011154	1	PLATE BACKING, RIGHT HAND			
- 5	1011465	1	BRAKE ACTUATOR KIT			
- 6	1011467	1	ANCHOR BODY KIT INCLUDES ITEM 14			
- 7	1011463	1	BRAKE SHOE PACKAGE (4 PIECES)			
- 8	1011466	1	SHOE RETAINER KIT			
- 9	1011464	1	BRAKE SPRING PACKAGE			
- 10	1011297	2	ARM, BRAKE LEVER			
- 11	1010829	2	PIN, 5/16" CLEVIS			
- 12	1035	2	PIN, COTTER			
- 13	1010850	2	COVER, DUST			
- 14	1011303	2	CAP, ADJUSTMENT BOLT			



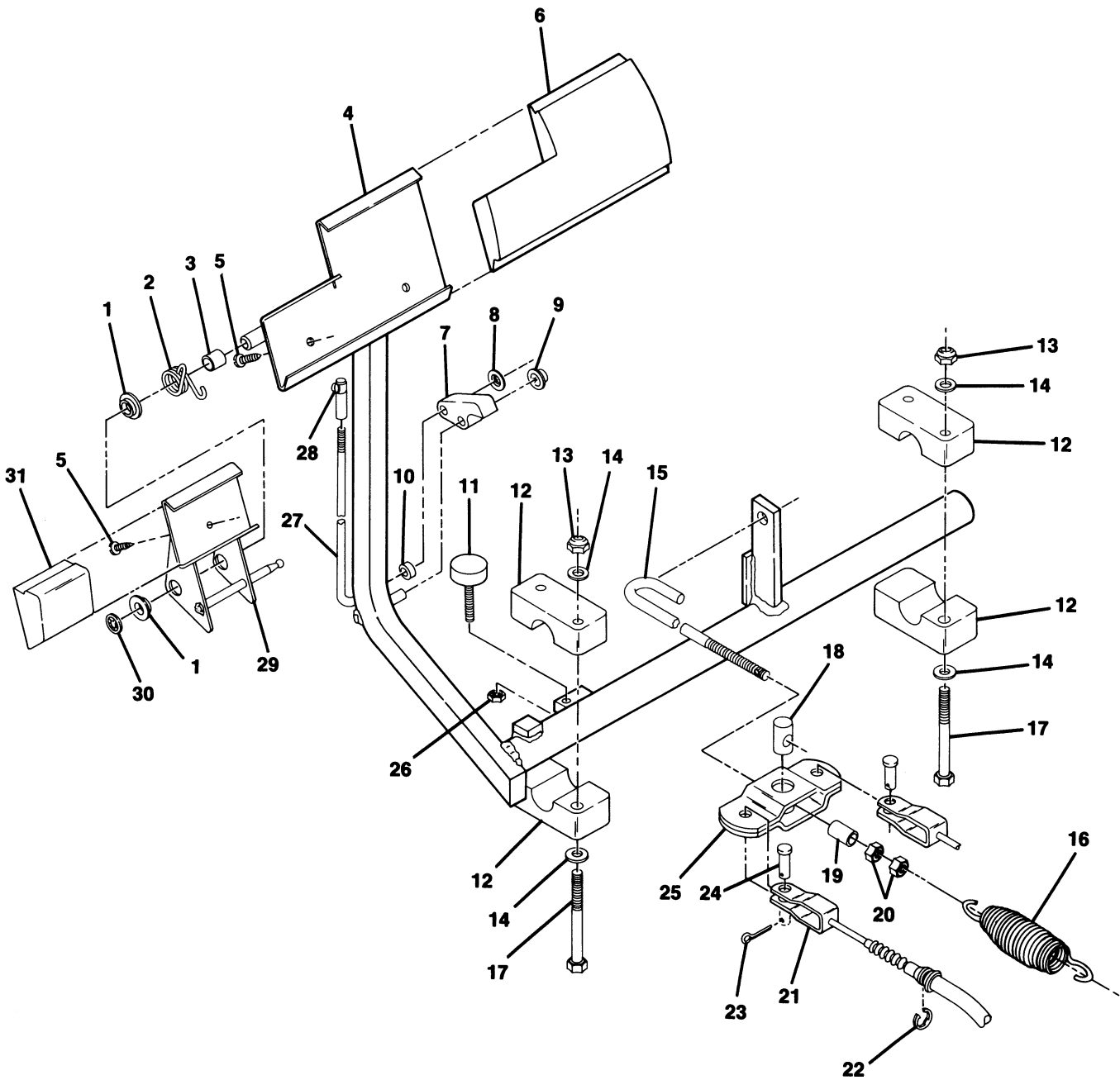


FIGURE 4-2. BRAKE PEDAL AND CABLE ASSEMBLY. SEE LIST 4-2.

BRAKE PEDAL AND CABLE ASSEMBLY

FIGURE- ITEM NUMBER	PART NUMBER	UNITS PER ASM	DESCRIPTION
2 -	NO #	1	BRAKE PEDAL AND CABLE ASSEMBLY FOR ILLUSTRATION SEE FIGURE 4-2
- 1	1032	2	NYLON BUSHING
- 2	1010933	1	TORSION SPRING
- 3	1010927	1	HILL BRAKE SPACER
- 4	1011406	1	BRAKE PEDAL KIT INCLUDES ITEMS 5 & 6
- 5	7716	3	SCREW, NO. 10-16 SHEET METAL
- 6	1013869	1	BRAKE PEDAL PAD
- 7	1011404	1	HILL BRAKE PAWL KIT INCLUDES ITEMS 8 AND 9
- 8	1011649	1	PUSH NUT
- 9	1010877	1	NUT, 5/16 PUSH
- 10	1010805	1	HILL BRAKE ROD SLEEVE
- 11	1010878	1	BRAKE STOP
- 12	1011402	1	BRAKE MOUNTING BLOCK PACKAGE (4 PIECES)
- 13	7473	4	NUT, 5/16-18 NYLON LOCK
- 14	1241	8	WASHER, 5/16 FLAT
- 15	1010808	1	EQUALIZER ROD
- 16	1013531	1	SPRING, BRAKE RETURN
- 17	1010921	4	BOLT, 5/16-18 HEX
- 18	1010814	1	PIN, EQUALIZER PIVOT
- 19	1013855	1	SPACER EQUALIZER
- 20	1242	2	NUT, 5/16-18 HEX
- 21	1011403	2	BRAKE CABLE KIT INCLUDES ITEMS 22, 23, 24
- 22	1011779	4	RING, "E"
- 23	1035	2	PIN, COTTER
- 24	1010829	2	PIN, 5/16 CLEVIS
- 25	1010809	1	EQUALIZER WELD ASSEMBLY
- 26	1028	1	NUT, 1/4-20 HEX
- 27	1010804	1	ROD, HILL BRAKE
- 28	1010932	1	BALL JOINT, 1/4-28
- 29	1011418	1	HILL BRAKE KIT INCLUDES ITEMS 1, 5, 29, 30, 31
- 30	1013876	1	NUT, 3/8 PUSH
- 31	1013870	1	PAD, HILL BRAKE



CARRYALL-I Electric

Manual No. 1014651 - Issue Date 6/88
Effective Serial No. F8827-148615 thru _____

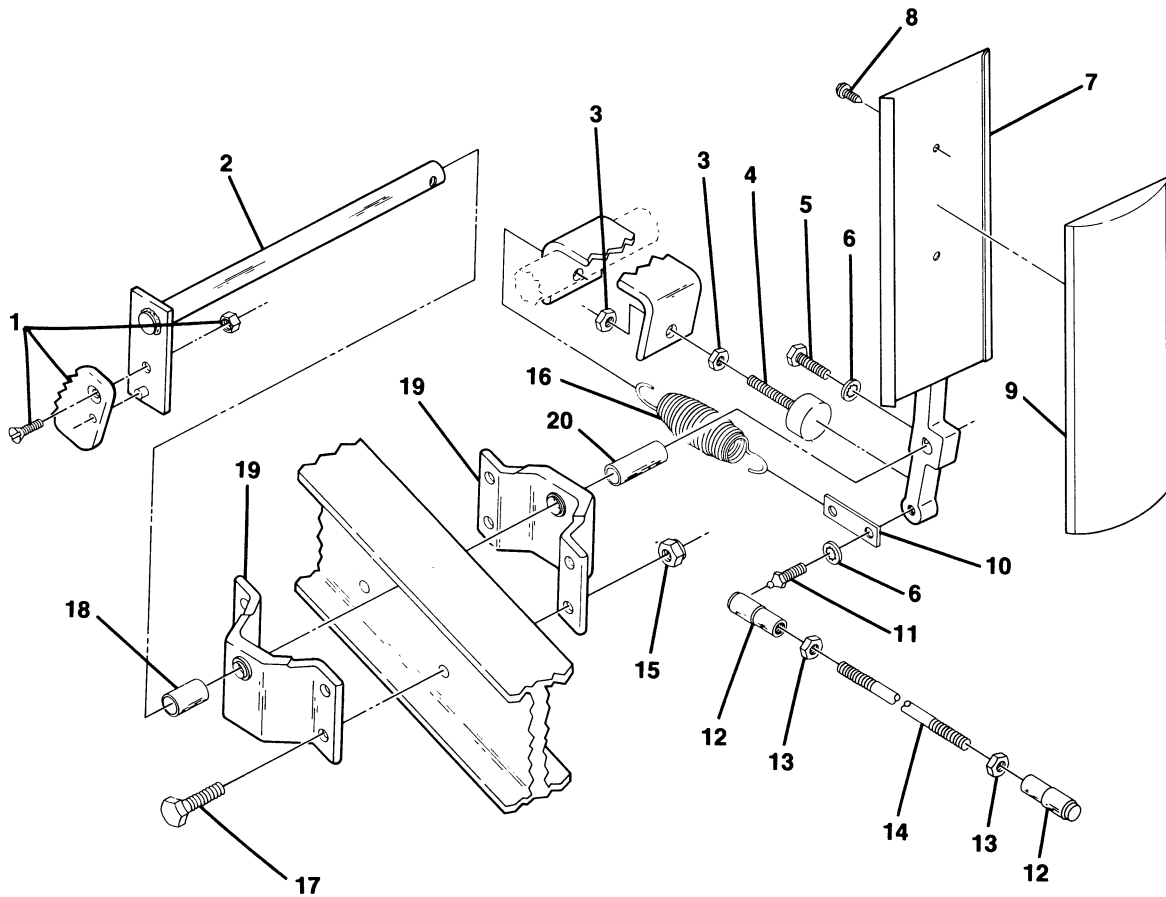


FIGURE 4-3. ACCELERATOR PEDAL ASSEMBLY. SEE LIST 4-3.

ACCELERATOR PEDAL ASSEMBLY

FIGURE- ITEM NUMBER	PART NUMBER	UNITS PER ASM	DESCRIPTION			
			1	2	3	4
3 -	NO #	1	ACCELERATOR PEDAL ASSEMBLY FOR ILLUSTRATION SEE FIGURE 4-3			
- 1	1011877	1	LATCH, HILL BRAKE			
- 2	1010847	1	ROD, ACCELERATOR PIVOT			
- 3	1028	2	NUT, 1/4-20 HEX			
- 4	1010878	1	STOP, BRAKE			
- 5	403	1	BOLT, 1/4-20 HEX			
- 6	8304	1	WASHER, 1/4" INT TOOTH LOCK			
- 7	1010969	1	ACCELERATOR PEDAL, ASSEMBLY INCLUDES ITEMS 8, 9, 10, 11			
- 8	7716	2	SCREW, #10-16 SHEET METAL			
- 9	1013871	1	PAD, ACCELERATOR			
- 10	1011691	1	HANGER, ACCELERATOR PEDAL SPRING			
- 11	1010954	1	BALL STUD, 1/4-28			
- 12	1011734	2	BALL JOINT, 1/4-28 SPRING LOADED			
- 13	1011084	2	NUT, 1/4-28 JAM			
- 14	1014016	1	ROD, ACCELERATOR			
- 15	8233	4	LOCKNUT, 1/4-20 NYLON			
- 16	1012075	1	SPRING, EXTENSION			
- 17	7479	4	BOLT, 1/4-20 HEX			
- 18	1011699	1	SPACER, 1/2			
- 19	1011694	2	BRACKET, ACCELERATOR BEARING			
- 20	1011700	1	SPACER, ACCELERATOR			



CARRYALL-I Electric

Manual No. 1Q14651 - Issue Date 6/88
Effective Serial No. F8827-148615 thru _____



Section V

ELECTRICAL SYSTEM

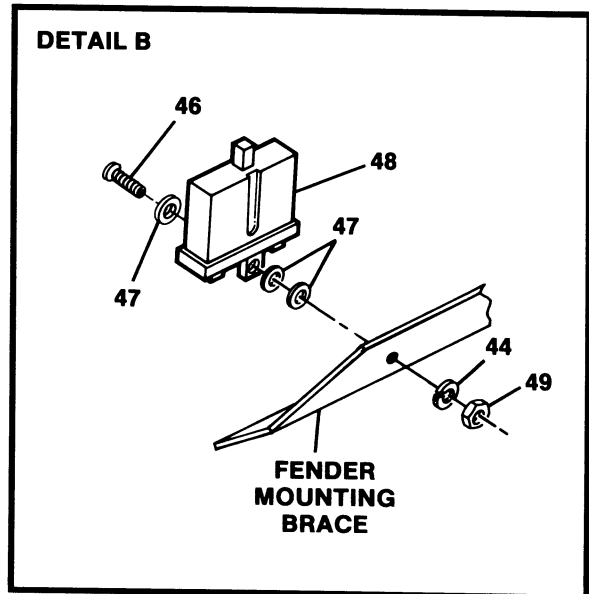
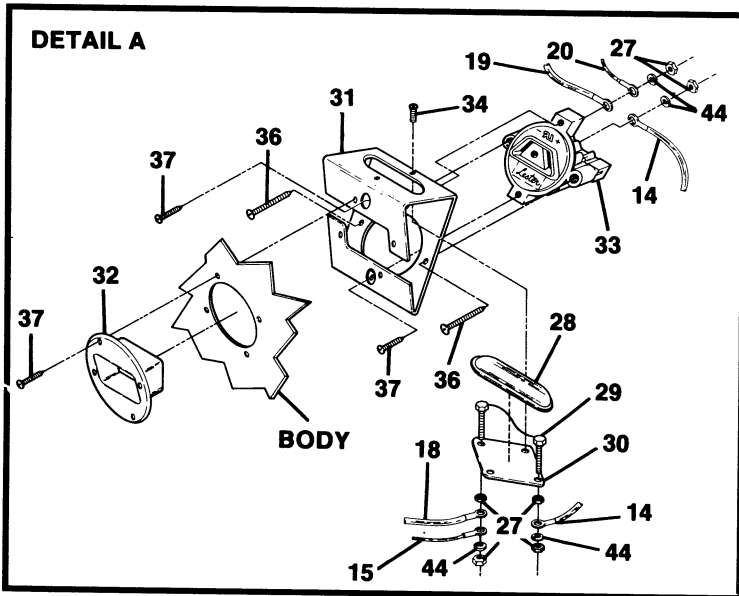
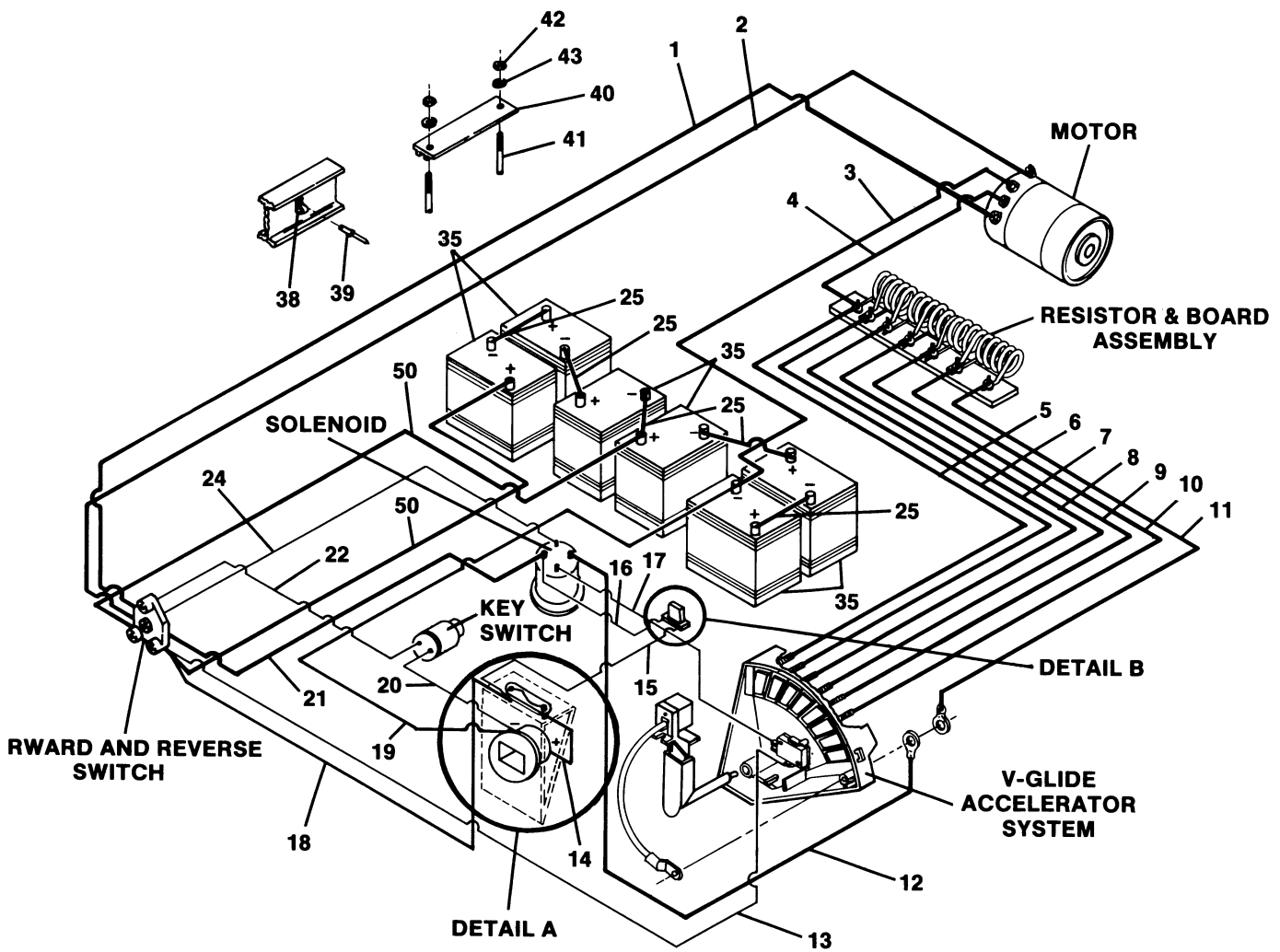


FIGURE 5-1. WIRING DIAGRAM. SEE LIST 5-1.

WIRING DIAGRAM

FIGURE- ITEM NUMBER	PART NUMBER	UNITS PER ASM	DESCRIPTION			
			1	2	3	4
1 -	NO #		WIRING DIAGRAM			
			FOR ILLUSTRATION, SEE FIGURE 5-1			
- 1	1011068	1	WIRE ASSEMBLY #6 RED			
- 2	1011070	1	WIRE ASSEMBLY #6 BLACK			
- 3	1012651	1	WIRE ASSEMBLY #6 BLACK			
- 4	1014038	1	WIRE ASSEMBLY #6 WHITE			
- 5	1014036	1	WIRE ASSEMBLY #6 BLACK			
- 6	1014035	1	WIRE ASSEMBLY #6 BLUE			
- 7	1014034	1	WIRE ASSEMBLY #6 GREEN			
- 8	1014033	1	WIRE ASSEMBLY #6 YELLOW			
- 9	1014032	1	WIRE ASSEMBLY #6 ORANGE			
- 10	1014031	1	WIRE ASSEMBLY #6 RED			
- 11	1014030	1	WIRE ASSEMBLY #6 WHITE			
- 12	1014029	1	WIRE ASSEMBLY #6 WHITE			
- 13	1014022	1	WIRE ASSEMBLY #18 RED			
- 14	1013092	1	WIRE ASSEMBLY #10 RED			
- 15	1014024	1	WIRE ASSEMBLY #18 ORANGE			
- 16	1012230	1	WIRE ASSEMBLY #18 WHITE			
- 17	1014023	1	WIRE ASSEMBLY #18 GREEN			
- 18	1012237	1	WIRE ASSEMBLY #10 RED			
- 19	1011010	1	WIRE ASSEMBLY #10 WHITE			
- 20	1011007	1	WIRE ASSEMBLY #18 RED			
- 21	1014039	1	WIRE ASSEMBLY #6 WHITE			
- 22	1011006	1	WIRE ASSEMBLY #18 BLUE			
- 23	1011069	1	WIRE ASSEMBLY #6 RED			
- 24	1014040	1	WIRE ASSEMBLY #18 YELLOW			
- 25	1010958	5	WIRE ASSEMBLY #6 BLACK			
- 27	8797	6	NUT #10-32, BRASS			
- 28	1012143	1	FUSE LENS			
- 29	1012085	1	FUSE, 80 AMP			
- 30	1012142	1	FUSE HOLDER			
- 31	1013628	1	FUSE AND RECEPTACLE MOUNTING BRACKET			
- 32	1013649	1	RECEPTACLE BEZEL			
- 33	4107	1	CHARGER RECEPTACLE			
- 34	1013266	2	SCREW, PHILLIPS HEAD, TYPE BT, #8-18 X 1/2"			
- 35	1013697	6	CLUB CAR SERIES 2200 BATTERY			
- 36	8795	2	SELF TAPPING SCREW, PHILLIPS PAN HEAD # 7 X 1-3/4"			
- 37	8796	6	SELF TAPPING SCREW, PHILLIPS PAN HEAD # 7 X 3/4"			
- 38	1012022	3	CABLE CLAMP			
- 39	1606	3	POP RIVET, 3/16"			
- 40	1010908	3	BATTERY HOLD DOWN			
- 41	1013683	6	"J" BOLT			
- 42	1014304	18	HEX NUT, 5/16-18 UNC S.S.			
- 43	1011578	6	FLAT WASHER, TYPE B, 5/16"			
- 44	1016	5	#10 SPLIT LOCKWASHER			
- 45	1014516	1	FUSE LINK KIT			
			INCLUDES ITEMS 28, 29, 30, 27 AND 44			
- 46	8104	1	SCREW, #10-32 ROUND HEAD			
- 47	183	3	FLATWASHER, #10			
- 48	1010051	1	BUZZER, REVERSE, 36V			
- 49	7893	1	NUT, #10-32 HEX			
- 50	1014828	1	WIRE ASSEMBLY #6 GREEN			



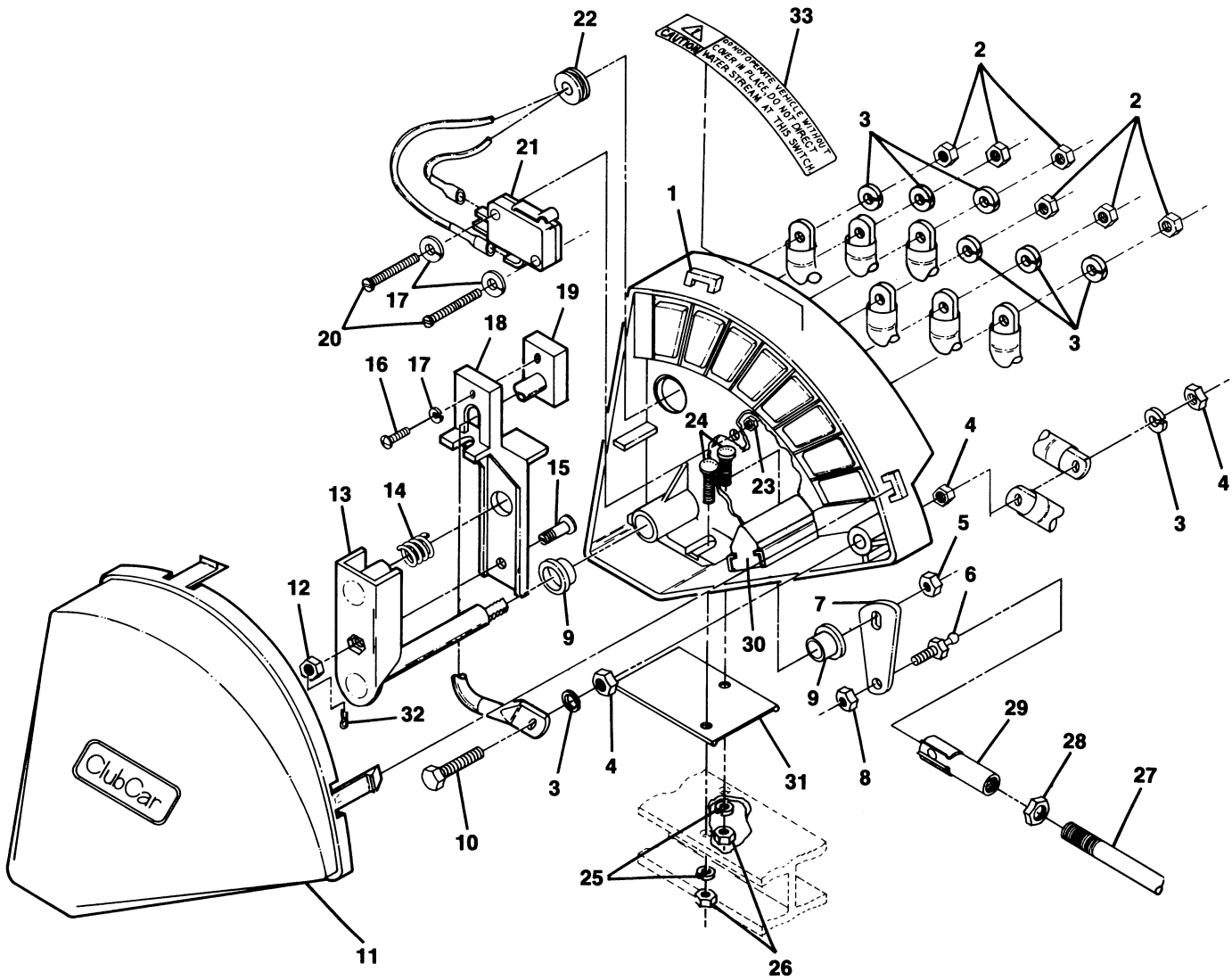


FIGURE 5-2. V-GLIDE ACCELERATOR SYSTEM. SEE LIST 5-2.

V-GLIDE ACCELERATOR SYSTEM

FIGURE- ITEM NUMBER	PART NUMBER	UNITS PER ASM	1 2 3 4	DESCRIPTION
2 -	NO #			V-GLIDE ACCELERATOR SYSTEM FOR ILLUSTRATION, SEE FIGURE 5-2
- 1	1014037	1		SPEED CONTROLLER CASE ASSEMBLY INCLUDES ITEMS 30 AND 33
- 2	1014	6		1/4"-20 UNC HEX NUT, BRASS
- 3	451	8		1/4" SPLIT LOCKWASHER
- 4	1014253	3		1/4"-20 BRASS JAM NUT
- 5	7473	1		5/16"-18 UNC NYLON LOCKNUT
- 6	1012353	1		1/4" X 1/4"-28, SHORT BALL STUD
- 7	1014003	1		SPEED CONTROLLER BELL CRANK
- 8	8449	1		1/4"-28 DIMPLED LOCKNUT
- 9	1012903	2		3/8" X 1/2" FLANGE BEARING
- 10	1014189	1		1/4"-20 X 1.75 HEX CAP SCREW, BRONZE
- 11	1013886	1		SPEED CONTROLLER COVER
- 12	7893	1		#10-32 UNF HEX NUT
- 13	1014017	1		SPEED CONTROLLER SHAFT AND CARRIER
- 14	1013998	1		SPEED CONTROLLER BRUSH SPRING
- 15	1014000	1		SPEED CONTROLLER ADJUSTING STUD
- 16	1014019	1		#4-40 UNC TYPE "F" SCREW
- 17	8058	3		#4 SPLIT LOCKWASHER
- 18	1013887	1		SPEED CONTROLLER ARM
- 19	1013860	1		SPEED CONTROLLER BRUSH
- 20	8056	2		#4-40 UNC X 3/4" ROUND HEAD SCREW
- 21	4240	1		LIMIT SWITCH
- 22	1014010	1		SPLIT GROMMET
- 23	8057	2		#4-40 UNC HEX NUT
- 24	1014109	2		#10-24 X 3/4" ROUND HEAD BOLT
- 25	1016	2		#10 SPLIT LOCKWASHER
- 26	1017	2		#10 HEX NUT
- 27	1014016	1		ACCELERATOR ROD
- 28	1011084	2		1/4-28 JAM NUT
- 29	1011734	2		BALL JOINT
- 30	1014414	1		BUMPER, SPEED CONTROLLER
- 31	1014367	1		SHIM, SPEED CONTROLLER
- 32	1014413	1		HAIR SPRING COTTER PIN
- 33	1014660	1		SPEED CONTROLLER DECAL



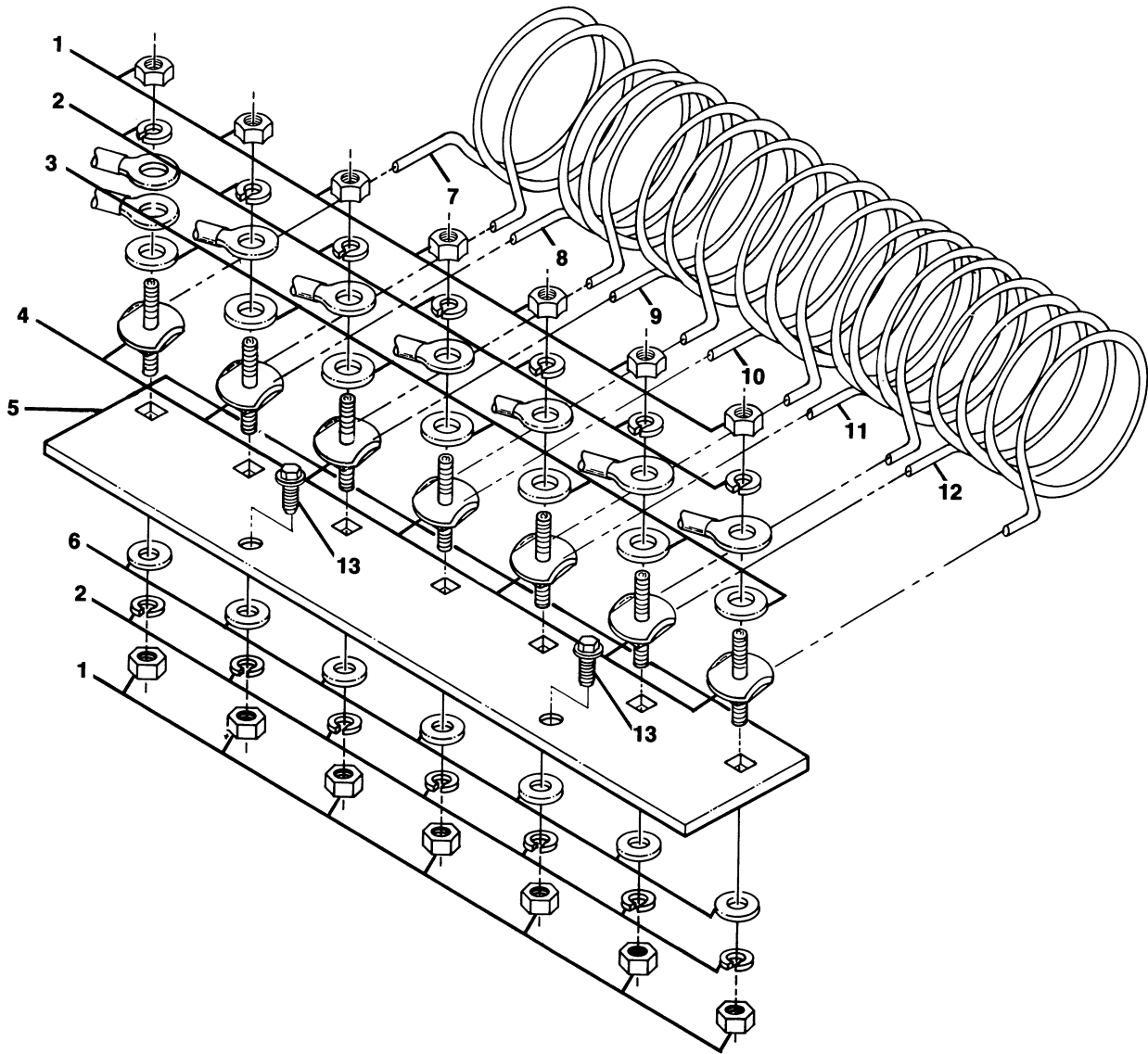


FIGURE 5-3. RESISTOR AND BOARD ASSEMBLY. SEE LIST 5-3.

RESISTOR AND BOARD ASSEMBLY

FIGURE- ITEM NUMBER	PART NUMBER	UNITS PER ASM	1 2 3 4	DESCRIPTION
3 -	NO #			RESISTOR AND BOARD ASSEMBLY FOR ILLUSTRATION, SEE FIGURE 5-3
- 1	1028	14		1/4"-20 UNC HEX NUT
- 2	451	14		1/4" SPLIT LOCKWASHER
- 3	1014306	7		1/4" WIDE FLAT WASHER
- 4	1014045	7		RESISTOR COIL STANDOFF
- 5	1014008	1		RESISTOR MOUNTING BOARD
- 6	332	7		1/4" FLAT WASHER
- 7	1014655	1		6TH SPEED COIL
- 8	1014654	1		5TH SPEED COIL
- 9	1014012	1		4TH SPEED COIL
- 10	1014013	1		3RD SPEED COIL
- 11	1014014	1		2ND SPEED COIL
- 12	1014015	1		1ST SPEED COIL
- 13	1012285	2		1/4-20 UNC X 5/8" THREAD ROLLING SCREW



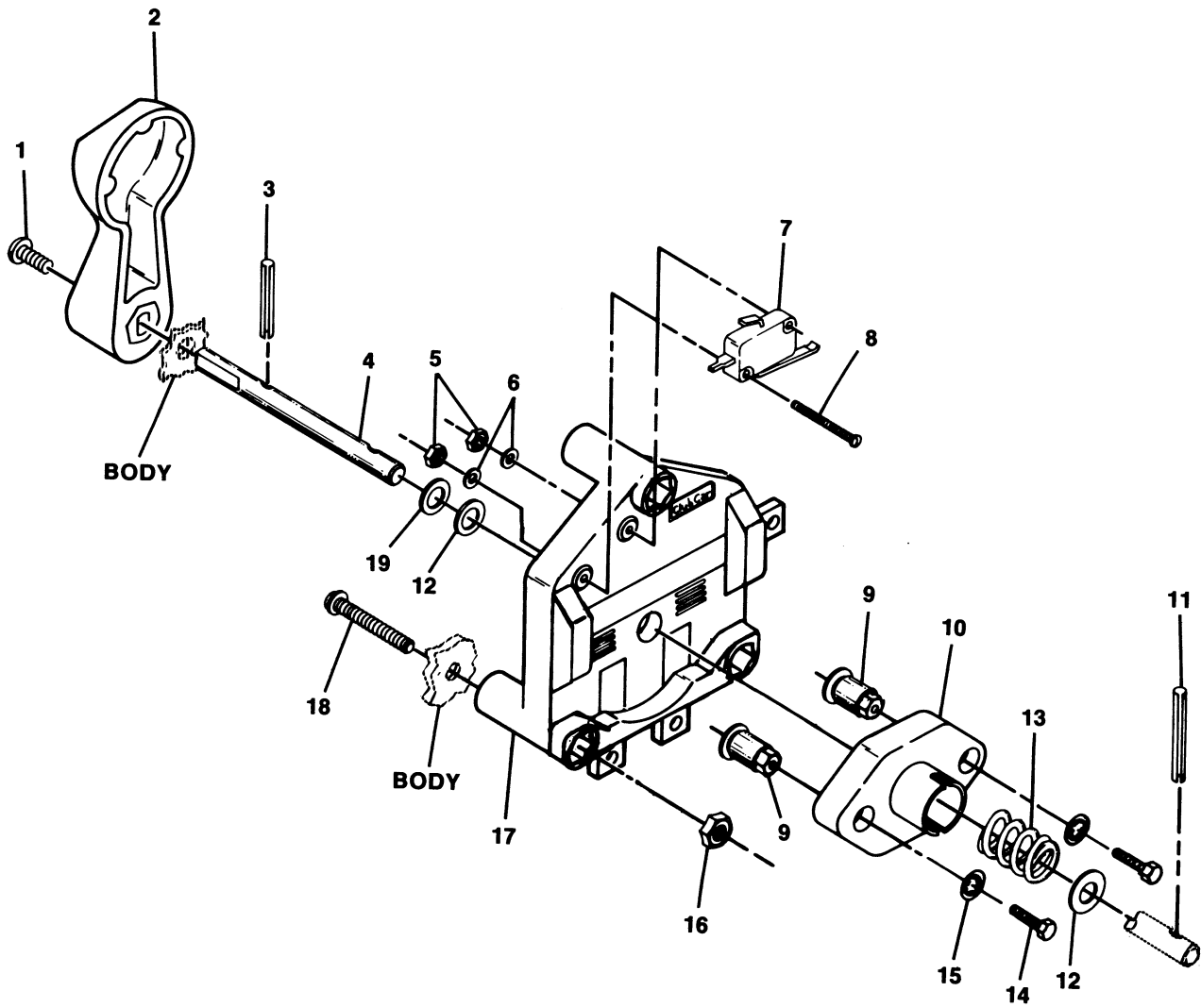
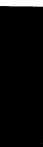


FIGURE 5-4. FORWARD AND REVERSE SWITCH ASSEMBLY. SEE LIST 5-4.

FORWARD AND REVERSE SWITCH ASSEMBLY

FIGURE- ITEM NUMBER	PART NUMBER	UNITS PER ASM	DESCRIPTION			
			1	2	3	4
4 -	1011997	1	FORWARD AND REVERSE SWITCH ASSEMBLY COMPLETE EXCLUDING ITEMS 1 AND 2 AND MOUNTING HARDWARE, ITEMS 14, 15, 16 AND 18 FOR ILLUSTRATION, SEE FIGURE 5-4			
- 1	1013198	1	SCREW, PHILLIPS MACHINE, #8-32			
- 2	1012987	1	SWITCH HANDLE, FORWARD AND REVERSE			
- 3	1231	1	ROLL PIN, 1/8 X 1"			
- 4	1012988	1	SHAFT, FORWARD AND REVERSE SWITCH			
- 5	8057	2	NUT, HEX, #4-40 UNC			
- 6	8058	2	LOCKWASHER, #4			
- 7	8991	1	MICROSWITCH, FORWARD AND REVERSE			
- 8	1011991	2	SCREW, SLOTTED ROUND HEAD, #4-40 X 1-1/8"			
- 9	8793	2	ROTOR CONTACT			
- 10	1011976	1	SWITCH ROTOR, FORWARD AND REVERSE			
- 11	1011993	1	ROLL PIN, 3/16" X 1-3/8"			
- 12	1011990	2	FLATWASHER, 3/8"			
- 13	7627	1	SHAFT SPRING, FORWARD AND REVERSE			
- 14	8450	2	SCREW, HEX HEAD MACHINE, #10-24			
- 15	8049	2	LOCKWASHER, INTERNAL TOOTH #10			
- 16	8233	3	LOCKNUT, NYLON, 1/4-20			
- 17	1014273	1	SWITCH CASE, FORWARD AND REVERSE			
- 18	1011988	3	SCREW, TRUSS HEAD PHILLIPS, 1/4-20 X 2"			
- 19	1014065	1	WASHER, PLASTIC, 3/8"			





Section VI
BATTERY CHARGERS

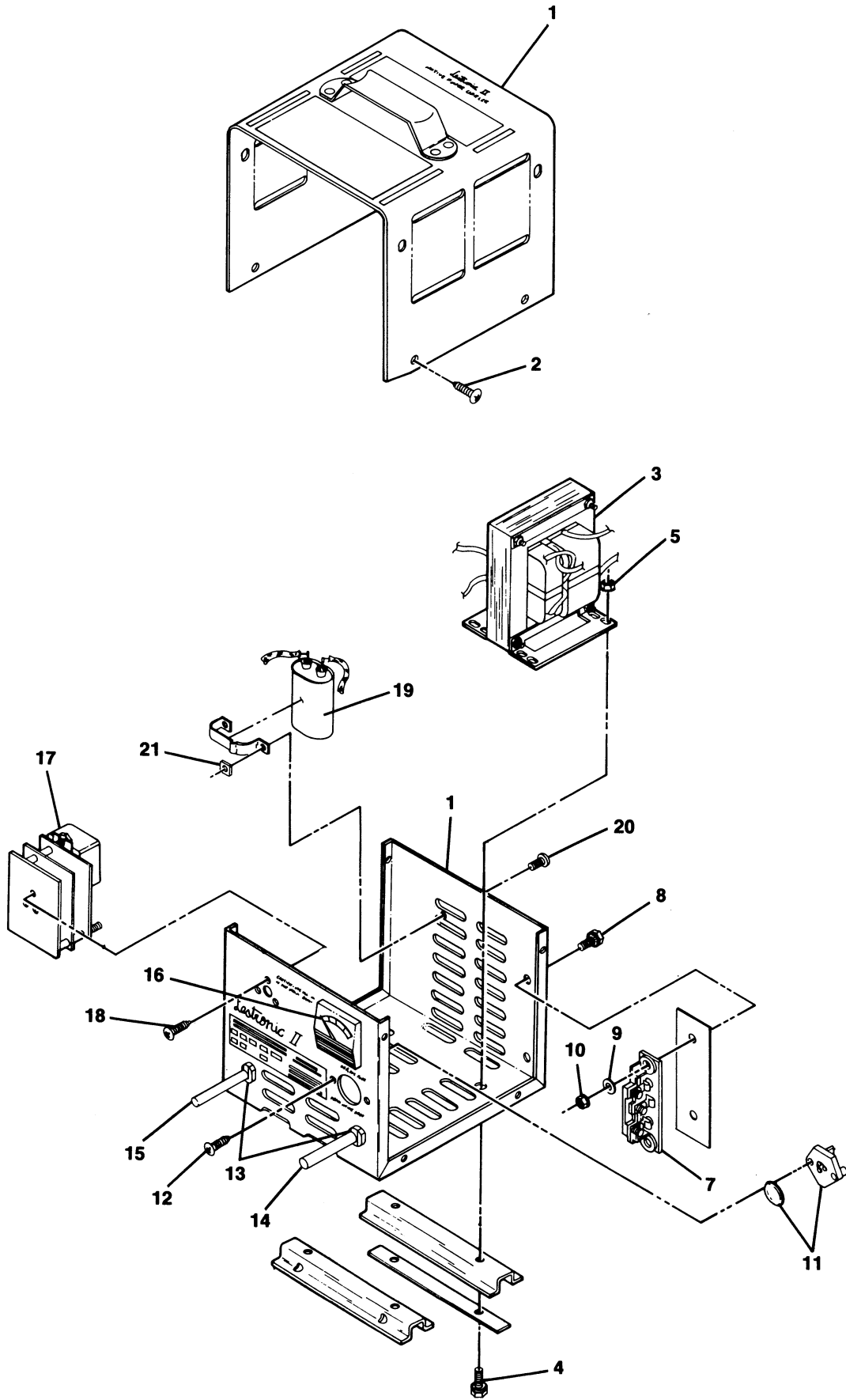


FIGURE 6-1. LESTER BATTERY CHARGER MODEL NO. 7850. SEE LIST 6-1.

LESTER BATTERY CHARGER MODEL NO. 7850

FIGURE- ITEM NUMBER	PART NUMBER	UNITS PER ASM	DESCRIPTION			
			1	2	3	4
1 -	1013807	1	LESTER BATTERY CHARGER MODEL NO. 7850 COMPLETE FOR ILLUSTRATION, SEE FIGURE 6-1			
- 1	1012103	1	CASE			
- 2	7716	8	SCREW, TYPE AB SELF-TAPPING, #10			
- 3	1012094	1	TRANSFORMER INCLUDES ITEMS 4 AND 5			
- 4	403	4	BOLT, HEX HEAD, 1/4-20 X 5/8"			
- 5	1012123	4	LOCKNUT, "K", 1/4-20			
- 7	1012102	1	HEATSINK ASSEMBLY INCLUDES ITEMS 8 AND 10			
- 8	1012127	2	SCREW, HEX WASHER HEAD MACHINE, #10-32 X 1/2"			
- 9	183	2	WASHER, PLAIN, #10			
- 10	1012133	2	LOCKNUT, "K", #10-32			
- 11	1012101	1	FUSE ASSEMBLY INCLUDES ITEM 12			
- 12	1012130	2	SCREW, TYPE AB SELF-TAPPING, #7			
- 13	1012098	2	BUSHING			
- 14	1013688	1	D.C. CORDSET			
- 15	1012099	1	A.C. CORDSET			
- 16	1012097	1	AMMETER			
- 17	1012096	1	ELECTRONIC TIMER			
- 18	1012056	3	SCREW, PHILLIPS HEAD MACHINE, #8-32 X 1/4"			
- 19	1012095	1	CAPACITOR			
- 20	1012129	1	SCREW, PHILLIPS HEAD MACHINE, #8-32 X 5/16"			
- 21	1011571	1	NUT, HEX, #8-32			
- 22	1013865	A/R	DECAL — BATTERY CHARGER CASE			



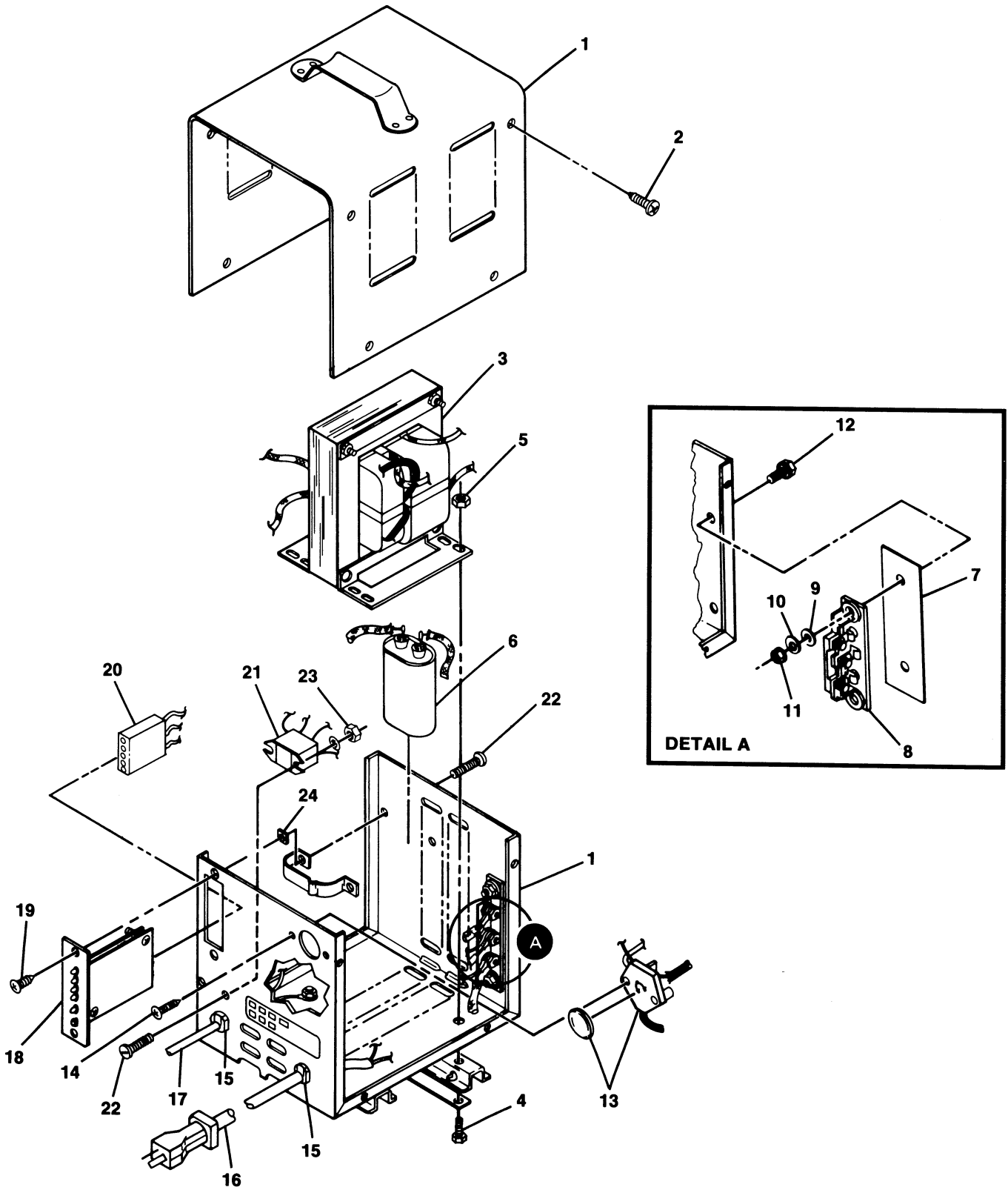


FIGURE 6-2. CLUB CAR SOLID STATE FULLY AUTOMATIC CHARGER. SEE LIST 6-2.

CLUB CAR SOLID STATE FULLY AUTOMATIC CHARGER

FIGURE- ITEM NUMBER	PART NUMBER	UNITS PER ASM	DESCRIPTION			
			1	2	3	4
2 -	1014194		CLUB CAR SOLID STATE FULLY AUTOMATIC CHARGER (MODEL 11340) FOR ILLUSTRATION, SEE FIGURE 6-2			
- 1	1014237	1	CASE ASSEMBLY (MODEL 11340)			
- 2	7577	8	SCREW, SELF-THREAD, #10 AB X 1/4"			
- 3	1013510	1	TRANSFORMER			
- 4	403	4	SCREW, HEX, 1/4-20 X 5/8"			
- 5	1012123	4	LOCKNUT, "K", 1/4-20			
- 6	1012095	1	CAPACITOR			
- 7	1013516	1	INSULATOR			
- 8	1012102	1	HEATSINK			
- 9	1012131	2	INSULATING WASHER			
- 10	183	2	FLATWASHER, #10			
- 11	1012133	2	LOCKNUT, "K", #10-32			
- 12	1012127	2	SCREW, WHIZ LOCK, #10-32 X 1/2"			
- 13	1012101	1	FUSE ASSEMBLY			
- 14	1012130	2	SCREW, SELF-THREAD, #7 X 1/2"			
- 15	1012098	2	BUSHING			
- 16	1013688	1	D.C. CORDSET			
- 17	1013514	1	A.C. CORDSET			
- 18	1014202	1	TIMER WITH STOP BUTTON (MODEL 11340)			
- 19	1013517	2	SCREW, SELF-THREAD, #8 AB X 3/8"			
- 20	1013513	1	CONTROL CABLE			
- 21	1013512	1	RELAY			
- 22	1012128	4	SCREW, #8-32 X 5/8"			
- 23	1013518	2	LOCKNUT, "K", #8-32			
- 24	1011571	2	NUT, HEX, #8-32			
- 25	1014190	1	OWNER'S MANUAL (MODEL 11340)			
- 26	1013865	A/R	DECAL, BATTERY CHARGER CASE			



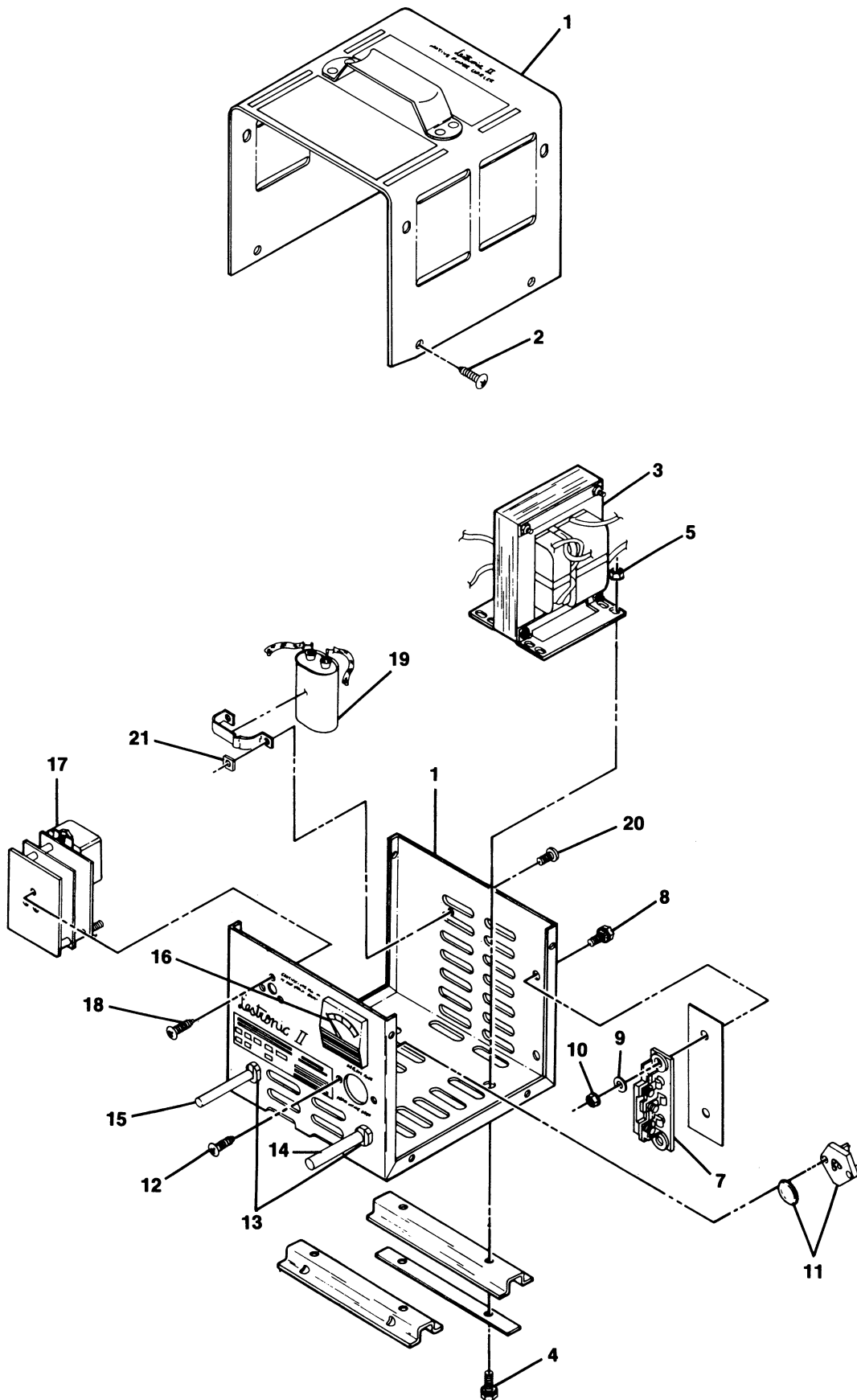


FIGURE 6-3. 230V-50Hz LESTER BATTERY CHARGER MODEL NO. 7030. SEE LIST 6-3.

230V-50Hz LESTER BATTERY CHARGER MODEL NO. 7030

FIGURE- ITEM NUMBER	PART NUMBER	UNITS PER ASM	DESCRIPTION			
			1	2	3	4
3 -	1014206	1	230V-50Hz LESTER BATTERY CHARGER MODEL NO. 7030 COMPLETE FOR ILLUSTRATION, SEE FIGURE 6-3			
- 1	1014695	1	CASE			
- 2	7716	8	SCREW, TYPE AB SELF-TAPPING, #10			
- 3	1014694	1	TRANSFORMER INCLUDES ITEMS 4 AND 5			
- 4	403	4	BOLT, HEX HEAD, 1/4-20 X 5/8"			
- 5	1012123	4	LOCKNUT, "K", 1/4-20			
- 7	1012102	1	HEATSINK ASSEMBLY INCLUDES ITEMS 8 AND 10			
- 8	1012127	2	SCREW, HEX WASHER HEAD MACHINE, #10-32 X 1/2"			
- 9	183	2	WASHER, PLAIN, #10			
- 10	1012133	2	LOCKNUT, "K", #10-32			
- 11	1012101	1	FUSE ASSEMBLY INCLUDES ITEM 12			
- 12	1012130	2	SCREW, TYPE AB SELF-TAPPING, #7			
- 13	1012098	2	BUSHING			
- 14	1013688	1	D.C. CORDSET			
- 15	1014696	1	A.C. CORDSET			
- 16	1012097	1	AMMETER			
- 17	1014697	1	ELECTRONIC TIMER			
- 18	1012056	3	SCREW, PHILLIPS HEAD MACHINE, #8-32 X 1/4"			
- 19	1012095	1	CAPACITOR			
- 20	1012129	1	SCREW, PHILLIPS HEAD MACHINE, #8-32 X 5/16"			
- 21	1011571	1	NUT, HEX, #8-32			
- 22	1013865	A/R	DECAL, BATTERY CHARGER CASE			





Section VII

ACCESSORIES

ACCESSORIES INDEX

ACCESSORIES ILLUSTRATED

DESCRIPTION	PAGE NO.
Figure 7-1. Wheel Cover	7-2
Figure 7-2. AM/FM Stereo Radio.....	7-3
Figure 7-3. Sports Canopy — Carryall-I	7-4
Figure 7-4. Sports Canopy Windshield	7-6
Figure 7-5. Lighting Package	7-8
Figure 7-6. Trailer Hitch	7-10

ACCESSORIES NOT ILLUSTRATED

DESCRIPTION	PART NO.
Heavy Duty Bumper	1014644
Number Decal - Rectangular	1012173
Heavy Duty Rear View Mirror Kit.....	1013846
Ashtray Kit	1011230
Rear View Mirror Kit	1011524
Battery Condition Indicator (Electric Fuel Gauge) Factory Installed Only	1013499
Replacement Gauge For Battery Condition Indicator	1013498
Hubodometer and Mounting Bracket	1010282
Hourmeter Kit, 36 Volt	1013579

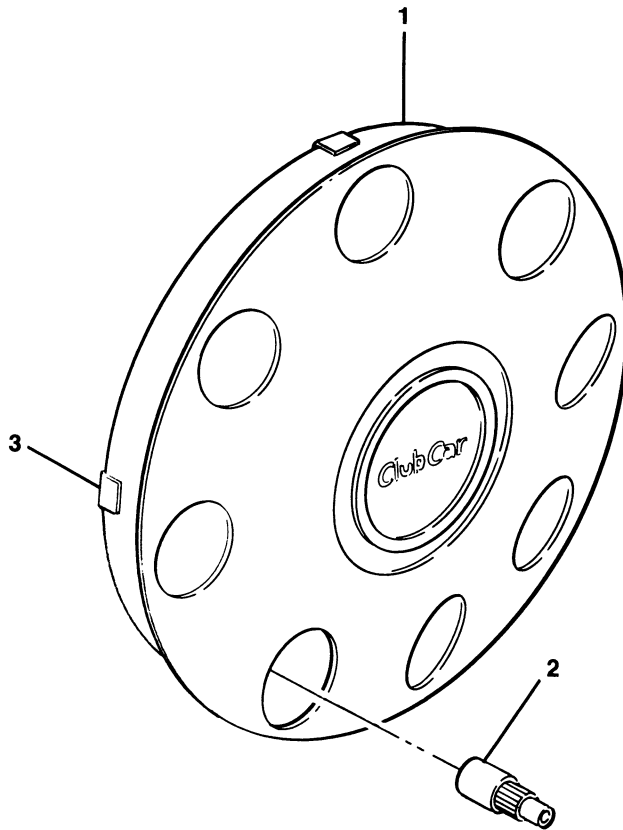


FIGURE 7-1. WHEEL COVER (FLAT). SEE LIST 7-1.

FIGURE- ITEM NUMBER	PART NUMBER	UNITS PER ASM	DESCRIPTION			
			1	2	3	4
1 -	1012642	4	FLAT WHEEL COVER KIT INCLUDES ITEMS 1 AND 2			
- 1	NO #	1	FLAT WHEEL COVER			
- 2	1012641	1	AIR VALVE EXTENSION			
- 3	1014452	A/R	HUBCAP CLIP			

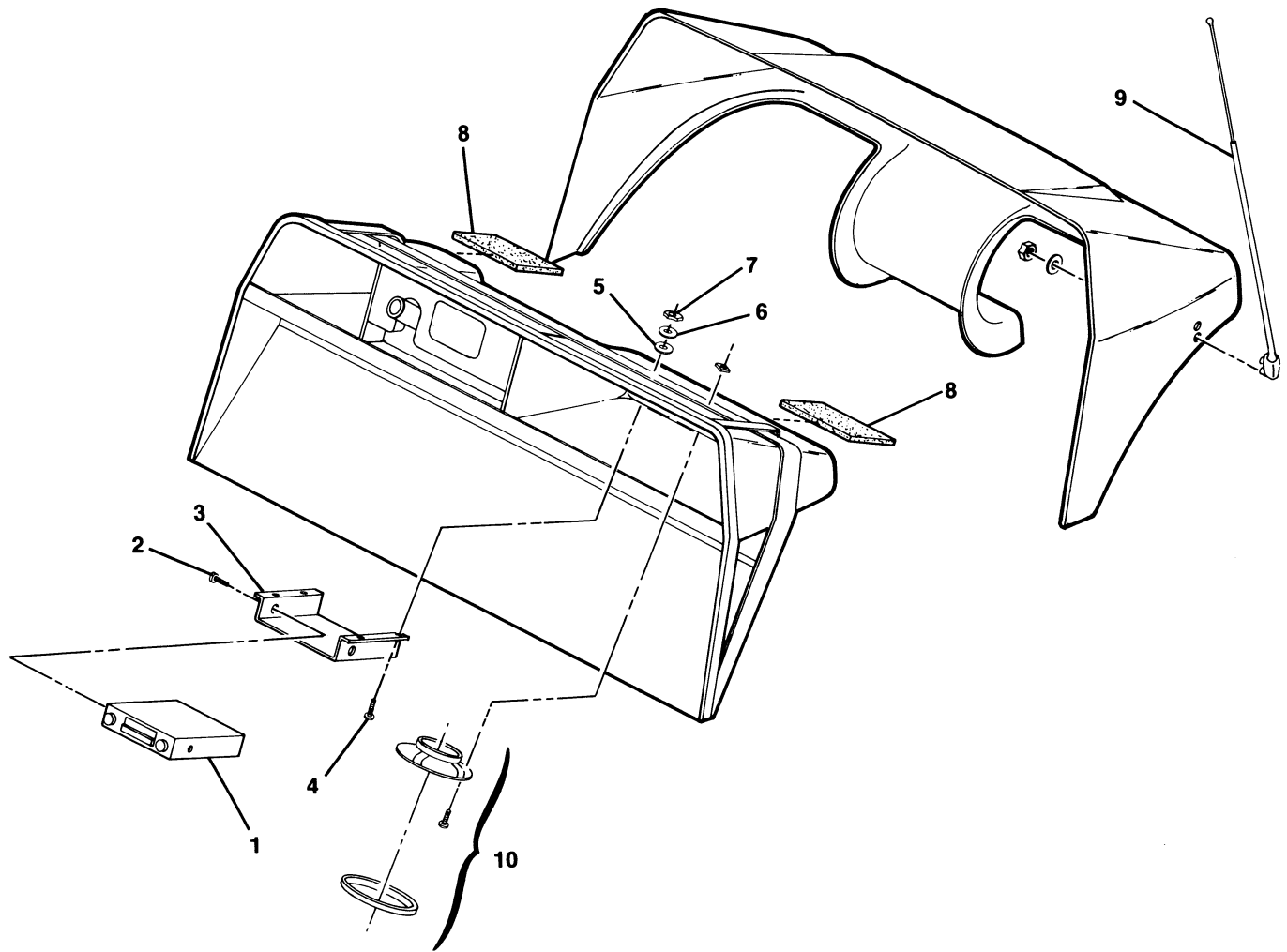


FIGURE 7-2. AM/FM STEREO RADIO. SEE LIST 7-2.

FIGURE- ITEM NUMBER	PART NUMBER	UNITS PER ASM	DESCRIPTION			
			1	2	3	4
2 -	1011658		AM/FM STEREO RADIO KIT INCLUDES ITEMS 1 THRU 10			
- 1	NO #	1	AM/FM STEREO RADIO			
- 2	1011687	2	SCREW, HEX HEAD #10-32 x 1/4"			
- 3	1011663	1	RADIO BRACKET			
- 4	8104	4	SCREW, ROUND HEAD, #10-32 x 3/4"			
- 5	183	4	FLATWASHER, #10			
- 6	8049	4	LOCKWASHER, INTERNAL TOOTH, #10			
- 7	7893	4	NUT, HEX, #10-32			
- 8	1011696	2	SPEAKER INSULATION			
- 9	1011678	1	ANTENNA			
- 10	1014534	1	SPEAKERS (PAIR)			



CARRYALL-I Electric

Manual No. 1014651 - Issue Date 6/88
Effective Serial No. F8827-148615 thru _____

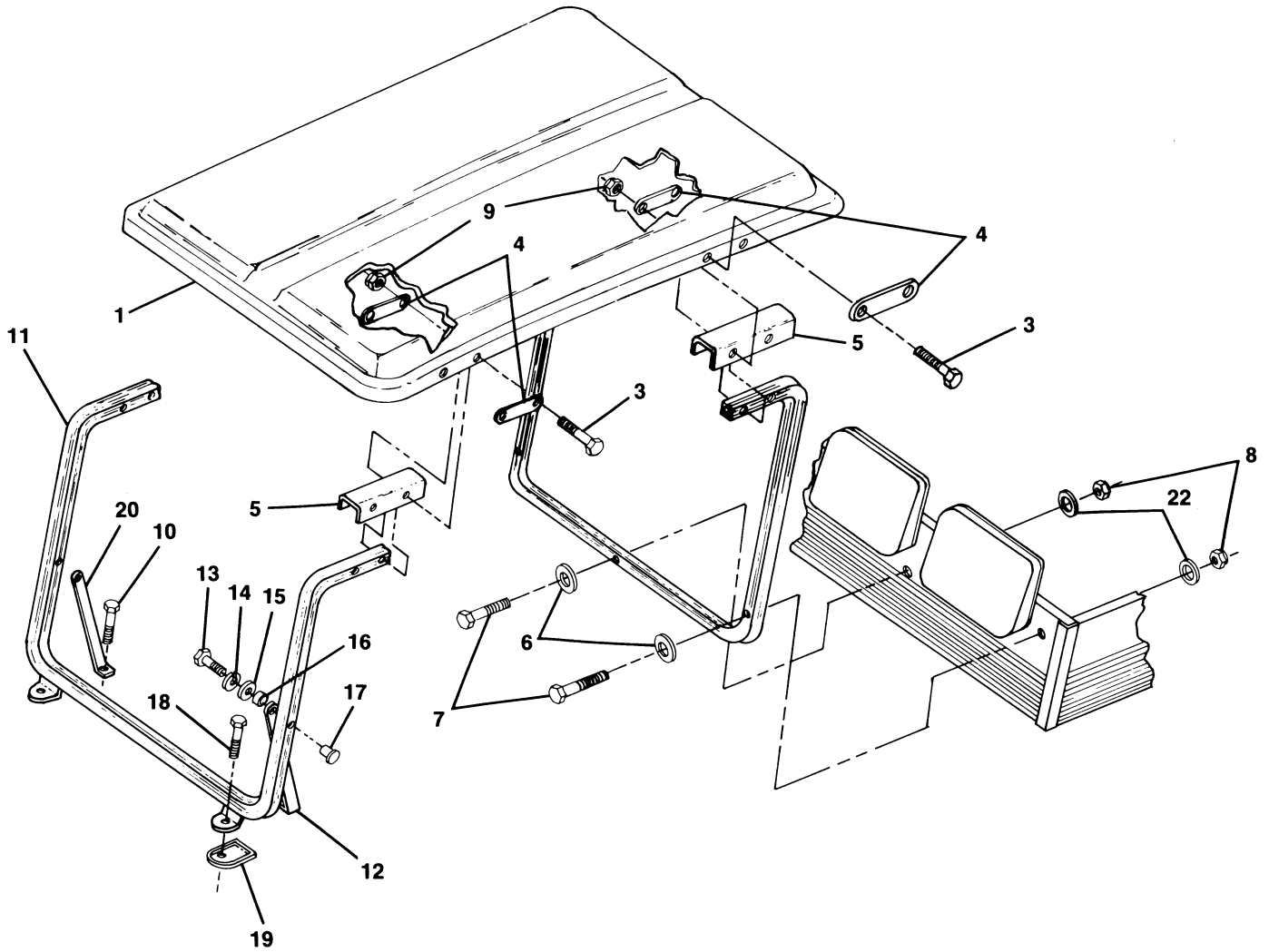


FIGURE 7-3. SPORTS CANOPY — CARRYALL-I. SEE LIST 7-3.

SPORTS CANOPY — CARRYALL-I

FIGURE- ITEM NUMBER	PART NUMBER	UNITS PER ASM	DESCRIPTION			
			1	2	3	4
3 -	1014506		SPORTS CANOPY KIT — CARRYALL-I FOR ILLUSTRATION, SEE FIGURE 7-3			
- 1	1014509	1	CANOPY ASSEMBLY			
- 2	1011942	2	MODIFIED GROMMET			
- 3	7311	8	BOLT, HEX HEAD, 1/4-20 x 2"			
- 4	1011852	8	CANOPY TRIM PLATE			
- 5	1012008	4	SIDE CANOPY SUPPORT			
- 6	1241	6	FLATWASHER, 5/16"			
- 7	8963	3	BOLT, HEX HEAD, 5/16-18 x 1-3/4"			
- 8	7473	3	LOCKNUT, NYLON, 5/16-18			
- 9	8233	8	LOCKNUT, NYLON, 1/4-20			
- 10	1218	2	BOLT, HEX HEAD, 5/16-18 X 1-1/4"			
- 11	1011868	1	WINDSHIELD FRAME ASSEMBLY			
- 12	1011865	1	KNEE BRACE — LEFT			
- 13	1703	2	BOLT, HEX HEAD, 1/4-20 x 1-1/2"			
- 14	1011964	2	LOCKWASHER, 1/4, STAINLESS STEEL			
- 15	1011965	2	FLATWASHER, 1/4, STAINLESS STEEL			
- 16	1010237	2	BUSHING			
- 17	1011878	2	CAPPED TEENUT			
- 18	1011937	2	BOLT, HEX HEAD, W/NYLON PATCH, 5/16-18 x 1-1/4"			
- 19	1011883	2	WINDSHIELD FRAME MOUNTING PAD			
- 20	1011862	1	KNEE BRACE — RIGHT			



CARRYALL-I Electric

Manual No. 1014651 - Issue Date 6/88
Effective Serial No. F8827-148615 thru _____

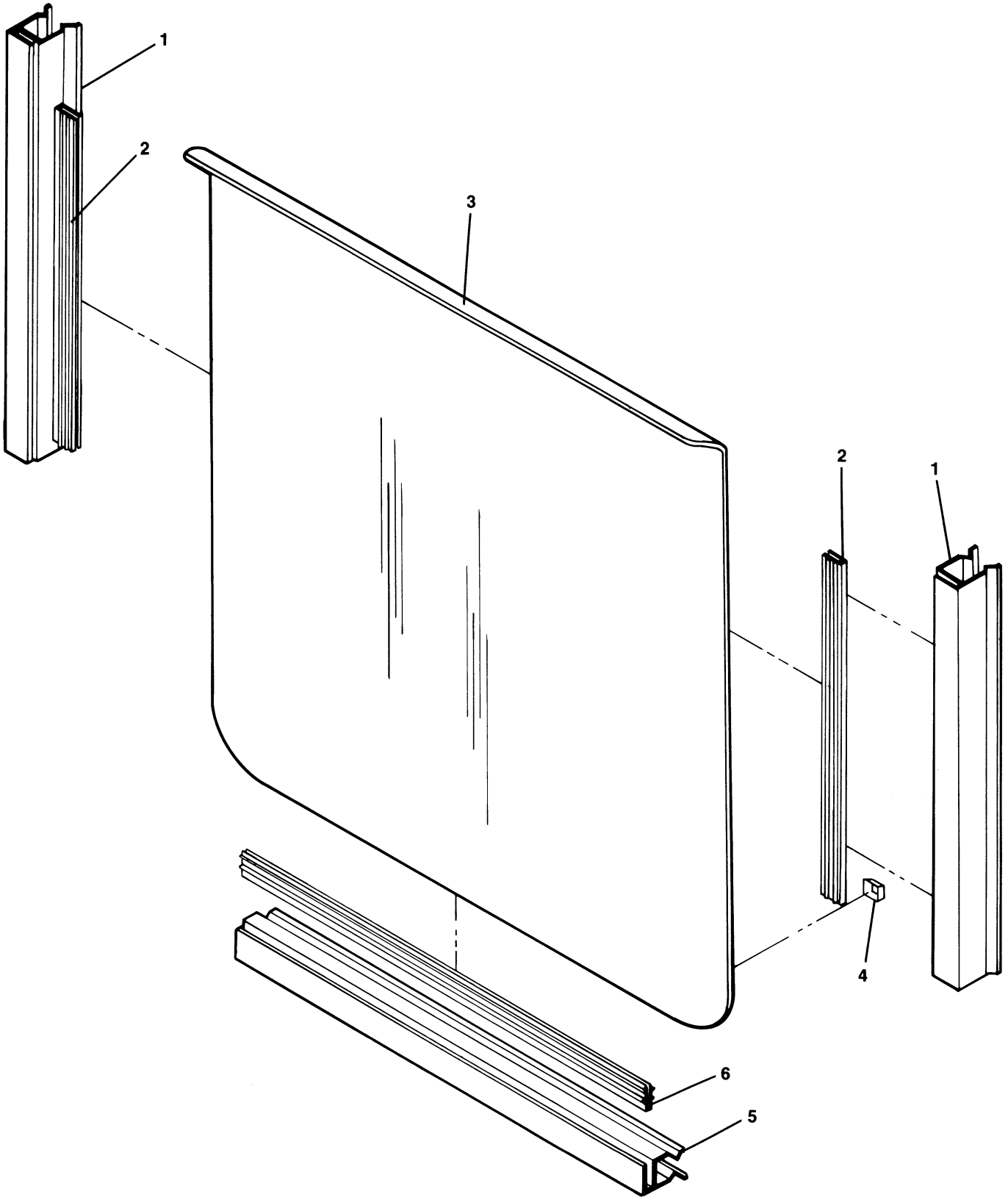


FIGURE 7-4. SPORTS CANOPY WINDSHIELD. SEE LIST 7-4.

SPORTS CANOPY WINDSHIELD

FIGURE- ITEM NUMBER	PART NUMBER	UNITS PER ASM	1 2 3 4	DESCRIPTION
4 -	1014435			SPORTS CANOPY WINDSHIELD KIT INCLUDES ITEMS 1 THRU 6 FOR ILLUSTRATION, SEE FIGURE 7-4
- 1	1014441	2		WINDSHIELD CHANNEL (SIDES)
- 2	NO #	2		VINYL SEALANT 22" (SEE ITEM 7)
- 3	NO #	1		WINDSHIELD
- 4	1011897	2		BUMPER
- 5	1014437	1		WINDSHIELD CHANNEL (BOTTOM)
- 6	NO #	1		VINYL SEALANT 30" (SEE ITEM 7)
- 7	1014436	A/R		VINYL SEALANT EXTRUSION (ORDER BY FEET ONLY)



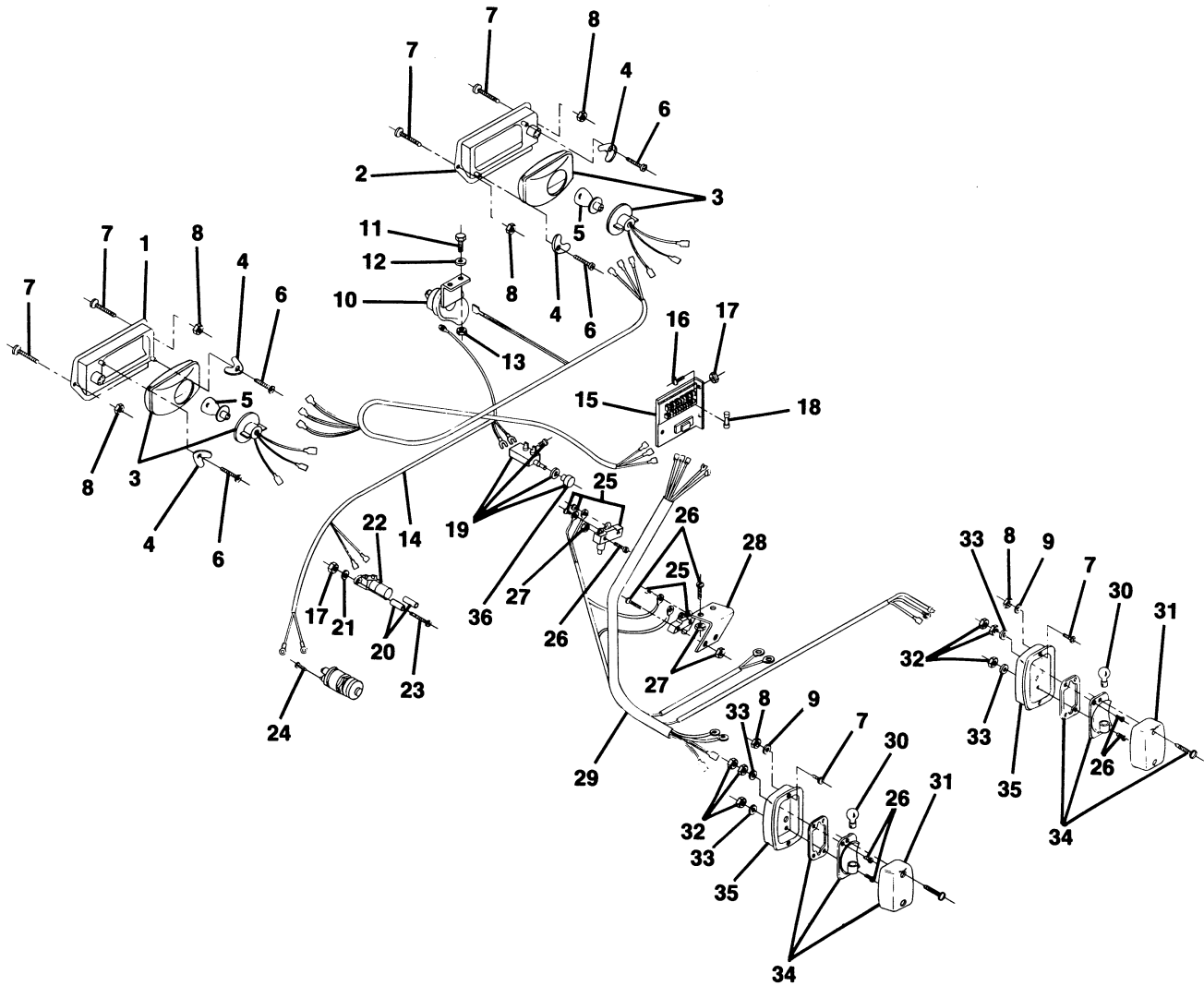


FIGURE 7-5. LIGHTING PACKAGE. SEE LIST 7-5.

LIGHTING PACKAGE

FIGURE- ITEM NUMBER	PART NUMBER	UNITS PER ASM	DESCRIPTION			
			1	2	3	4
5 -	1013804	1	LIGHTING PACKAGE — COMPLETE FOR ILLUSTRATION, SEE FIGURE 7-5			
- 1	1014176	1	BEZEL & REFLECTOR ASSEMBLY — LEFT			
- 2	1014177	1	BEZEL & REFLECTOR ASSEMBLY — RIGHT			
- 3	1014167	2	HEADLAMP INCLUDES ITEM 5			
- 4	1014156	4	BRACKET — LAMP MOUNTING			
- 5	1014180	2	BULB — HEADLAMP			
- 6	1010715	4	SCREW — #10-14 TRI-LOB TRUSS HEAD			
- 7	1011498	8	SCREW — #8-32 OVAL COUNTERSUNK HEAD MACHINE			
- 8	1011571	8	NUT — #8-32 HEX			
- 9	1011610	4	FLATWASHER — #8			
- 10	4029	1	HORN AND BRACKET ASSEMBLY			
- 11	304	2	BOLT, HEX HEAD, 1/4-20 UNC x 1"			
- 12	332	2	FLATWASHER, 1/4"			
- 13	8233	2	LOCKNUT, 1/4-20 NYLON			
- 14	1013795	1	WIRE HARNESS HEADLIGHT			
- 15	1011502	1	TERMINAL BLOCK AND FUSE PANEL ASSEMBLY			
- 16	8104	2	SCREW, ROUND HEAD, #10-32 x 3/4"			
- 17	7893	4	NUT, HEX, #10-32			
- 18	8106	3	FUSE, 20 AMP			
- 19	4034	1	LIGHT SWITCH ASSEMBLY INCLUDES ITEM 36			
- 20	1010910	2	STAND OFF DIMMER SWITCH			
- 21	8049	2	LOCKWASHER, #10 INTERNAL TOOTH			
- 22	1010889	1	DIMMER SWITCH			
- 23	1010909	2	SCREW, ROUND HEAD, #10-32 x 1-1/4"			
- 24	1013443	1	HORN BUTTON — FLOOR MOUNTED			
- 25	1011439	2	OVERTRAVEL PLUNGER SWITCH			
- 26	1011557	10	SCREW, SLOTTED PAN HEAD, #6-32 x 1"			
- 27	1011229	6	LOCKNUT, "K", #6-32 UNC			
- 28	1011742	1	BRAKE LIGHT SWITCH BRACKET			
- 29	1013752	1	WIRE HARNESS TAILLIGHT			
- 30	1011582	2	TAILLIGHT BULB			
- 31	1011843	2	TAILLIGHT LENS			
- 32	1011558	6	NUT, HEX HEAD, #6-32 UNC			
- 33	7591	4	FLATWASHER, #6			
- 34	1011586	2	TAILLIGHT INCLUDES ITEMS 30 AND 31			
- 35	1011497	2	TAILLIGHT BEZEL			
- 36	1013857	1	KNOB — LIGHT SWITCH			



CARRYALL-I Electric

Manual No. 1014651 - Issue Date 6/88
Effective Serial No. F8827-148615 thru _____

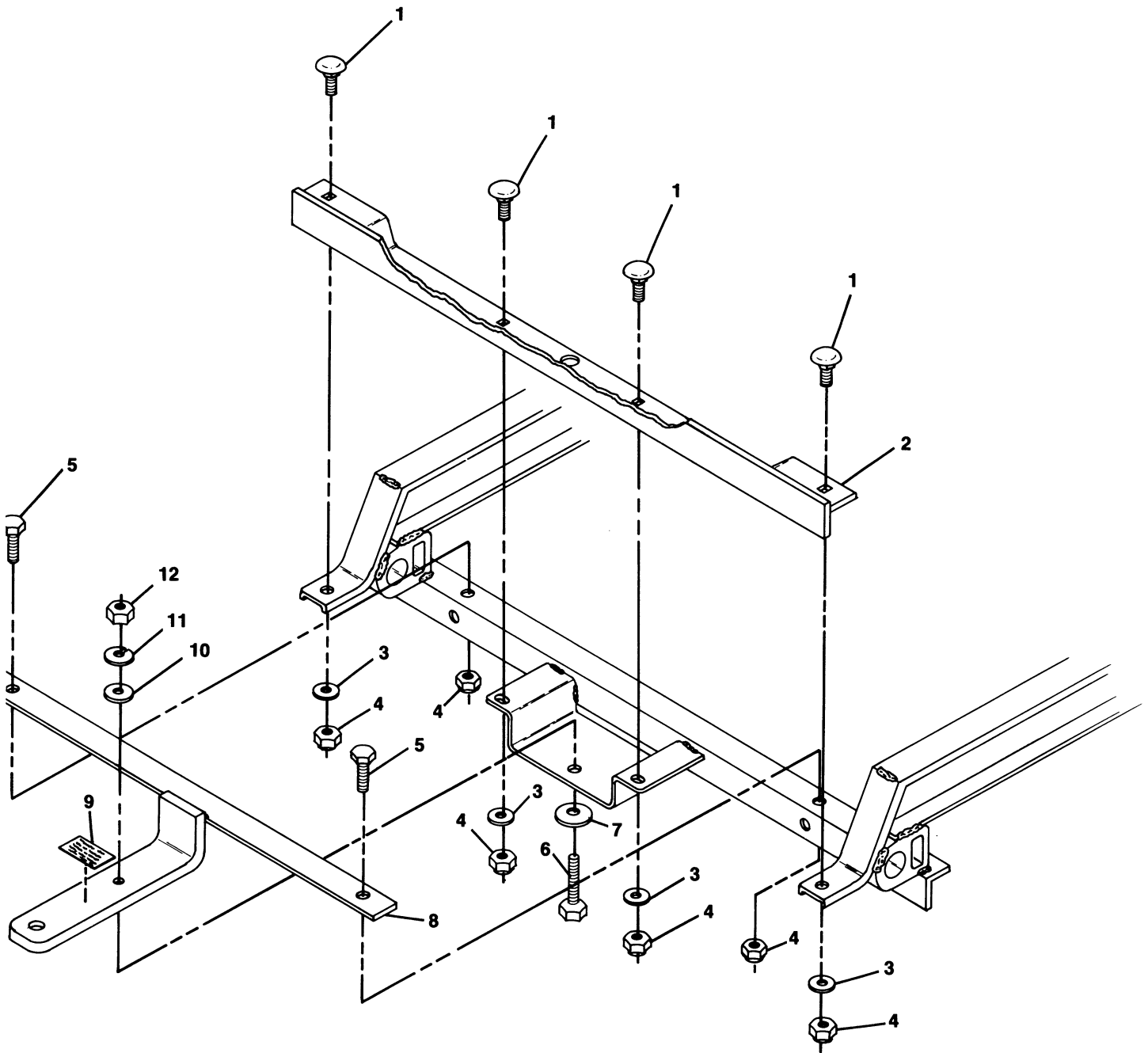


FIGURE 7-6. TRAILER HITCH. SEE LIST 7-6.

TRAILER HITCH

FIGURE- ITEM NUMBER	PART NUMBER	UNITS PER ASM	DESCRIPTION			
			1	2	3	4
6 -	1014491	1	TRAILER HITCH KIT INCLUDES ITEMS 1 THRU 12 FOR ILLUSTRATION, SEE FIGURE 7-6			
- 1	1010435	4	CARRIAGE BOLT, 5/16-18 X 1"			
- 2	1014543	1	TRAILER HITCH BRACE WELDMENT			
- 3	1241	4	FLATWASHER, 5/16			
- 4	7473	6	LOCKNUT, 5/16-18			
- 5	1218	2	HEX BOLT, 5/16-18 X 1-1/4"			
- 6	1624	1	HEX BOLT, 3/8-16 X 1-1/2"			
- 7	808	1	GROMMET WASHER, 3/8"			
- 8	1014488	1	TRAILER HITCH WELD ASSEMBLY			
- 9	1011553	1	TRAILER HITCH DECAL			
- 10	1011990	1	FLATWASHER, 3/8"			
- 11	357	1	LOCKWASHER, 3/8"			
- 12	706	1	HEX NUT, 3/8-16			



Section VIII

MAINTENANCE SERVICE TOOLS

DESCRIPTION	PART NO.
Internal Retaining Pliers	1013593
Spray Paint, Gray	1013805
Brake Adjusting Tool	1013582
Fiberglass Repair Kit	1012093
Volt Ohm Meter	1011480
Continuity Tester	1011273
Retaining Ring Pliers (45° External)	1012549
Retaining Ring Pliers (90° Internal)	1012560
Keyswitch Tool	1012801
Seal Puller	1012809
Bearing Puller	1012811
Bearing Puller Wedge Attachment	1012812
Hydrometer	1011478
Battery Tester (Discharge Machine)	1010687
Battery Thermometer	1011767
Drive Unit Pinion Seal Tool	1014161
Drive Unit Axle Seal Tool	1014162
Steering Column Bearing Press Tool	1014261
Steering Column Retaining Ring Tool	1014259
Battery Terminal Protector	1014305
Dry Graphite Lubricant	1012151

Please refer to the appropriate Maintenance and Service Manual for proper tool application.



WARNING

This manual to be used for identification and ordering of service parts only. Be sure to read and use the maintenance and service manual for any repair.

